

APP CRS	Rwy Idg	<b>4855</b>
<b>179°</b>	TDZE	<b>912</b>
	Apt Elev	<b>912</b>

# RNAV (GPS) RWY 18

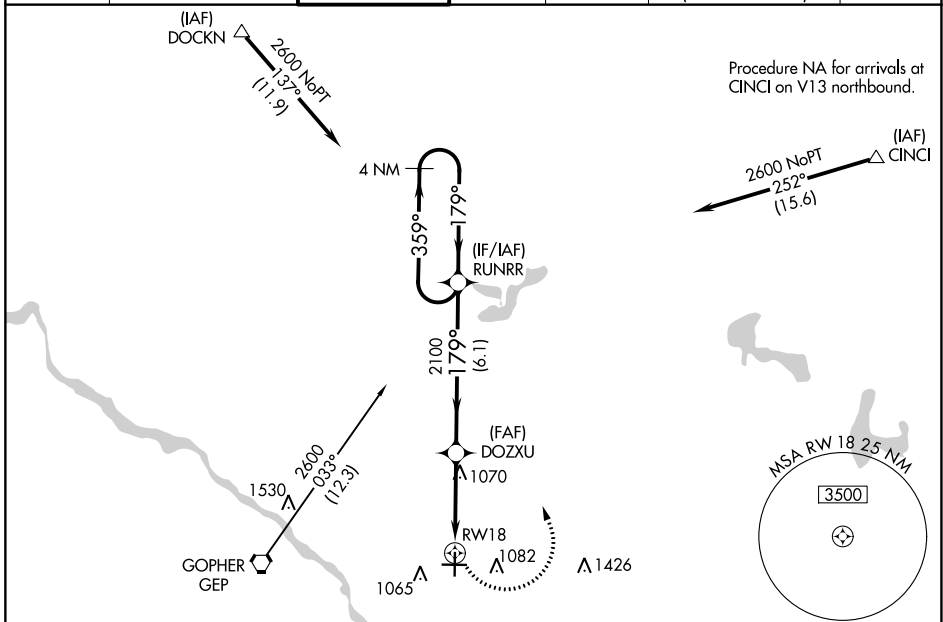
ANOKA COUNTY/BLAINE (JANES FLD) (A.N.E.)

RNP APCH - GPS.

When local altimeter setting not received, use Crystal altimeter setting and increase all MDA 40 feet and Circling Cat D visibility ¼ SM. VDP NA when using Crystal altimeter setting.

MISSED APPROACH: Climbing left turn to 2600 direct RUNRR and hold.

ATIS	MINNEAPOLIS APP CON	ANOKA TOWER*	GND CON	CLNC DEL	CLNC DEL	UNICOM
<b>120.625</b>	<b>126.5 335.65</b>	<b>132.4 (CTAF) 0</b>	<b>121.85</b>	<b>121.3</b>	<b>121.85</b> (When twr closed)	<b>122.95</b>



ELEV 912	TDZE 912
----------	----------

HIRL Rwy 9-27 0  
MIRL Rwy 18-36 0  
REIL Rws 9, 18 and 36 0

2600	RUNRR		
		DOZ XU	RUNRR 4 NM Holding Pattern
		1.3 NM to RW18	359° → 2600
		1.3 NM	← 179°
		2.3 NM	← 179°
		6.1 NM	

CATEGORY	A	B	C	D
LNVA MDA	1380-1	468 (500-1)	1380-1 3/8	468 (500-1 3/8)
CIRCLING	1400-1	488 (500-1)	1460-1 1/2	1580-2
			548 (600-1 1/2)	668 (700-2)

NC-1, 22 FEB 2024 to 21 MAR 2024

NC-1, 22 FEB 2024 to 21 MAR 2024