

WAAS CH <b>82312</b> <b>W09A</b>	APP CRS <b>089°</b>	Rwy Idg TDZE Apt Elev	<b>5000</b> <b>910</b> <b>912</b>
--	------------------------	-----------------------------	---

# RNAV (GPS) RWY 9

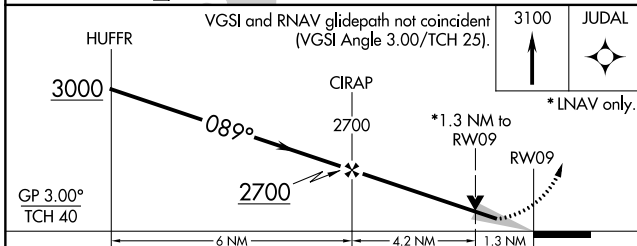
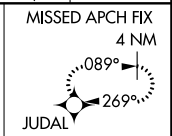
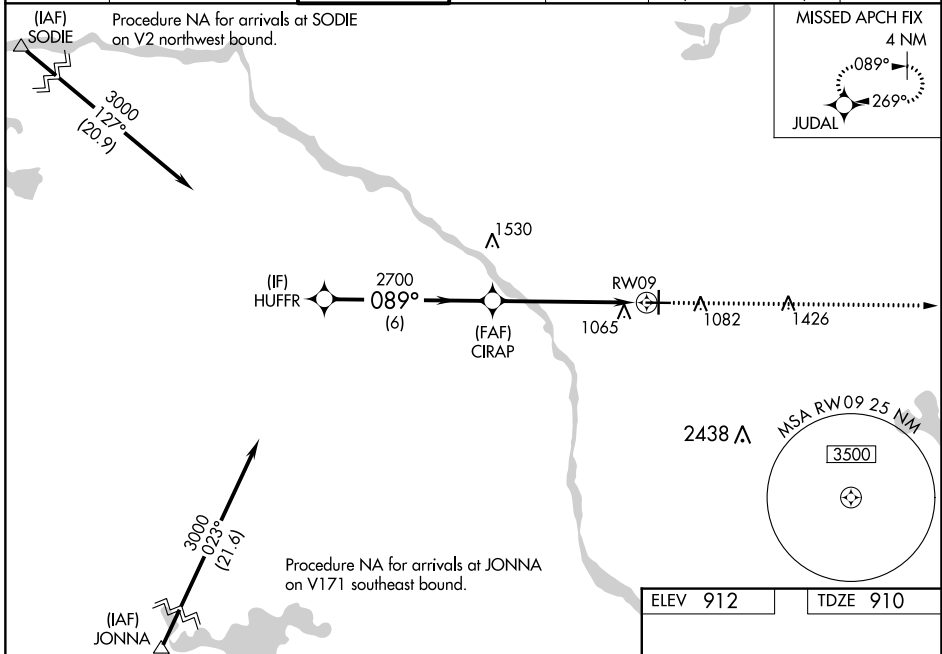
ANOKA COUNTY/BLAINE (JANES FLD) (A.N.E.)

**RNP APCH - GPS.**

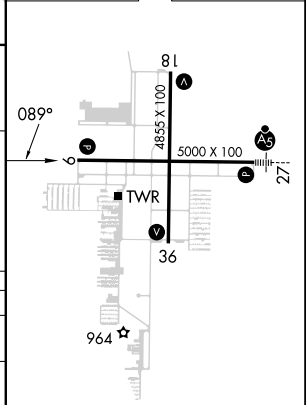
**⚠** When local altimeter setting not received, use Crystal altimeter setting: increase LPV DA to 1246 feet and all visibilities  $\frac{1}{8}$  SM; increase LNAV/VNAV DA to 1373 feet; increase all MDA 40 feet and LNAV Cat C/D visibility  $\frac{1}{8}$  SM and Circling Cat D visibility  $\frac{1}{2}$  SM. Baro-VNAV and VDP NA when using Crystal altimeter setting. For uncompensated Baro-VNAV systems, LNAV/VNAV NA below  $-16^{\circ}\text{C}$  or above  $54^{\circ}\text{C}$ .

**MISSED APPROACH:** Climb to 3100 direct JUDAL and hold.

ATIS <b>120.625</b>	MINNEAPOLIS APP CON <b>126.5 335.65</b>	ANOKA TOWER* <b>132.4 (CTAF) 0</b>	GND CON <b>121.85</b>	CLNC DEL <b>121.3</b>	CLNC DEL <b>121.85</b> (When twr closed)	UNICOM <b>122.95</b>
------------------------	--	---------------------------------------	--------------------------	--------------------------	--	-------------------------



ELEV 912	TDZE 910
----------	----------



CATEGORY	A	B	C	D
LPV DA	1225- $\frac{7}{8}$		315 (400- $\frac{7}{8}$ )	
LNAV/VNAV DA	1352-1 $\frac{3}{8}$		442 (500-1 $\frac{3}{8}$ )	
LNAV MDA	1340-1	430 (500-1)	1340-1 $\frac{1}{4}$	430 (500-1 $\frac{1}{4}$ )
<b>C</b> CIRCLING	1400-1	488 (500-1)	1460-1 $\frac{1}{2}$ 548 (600-1 $\frac{1}{2}$ )	1580-2 668 (700-2)

HIRL Rwy 9-27 **1**  
 MIRL Rwy 18-36 **1**  
 REIL Rwy 9, 18 and 36 **1**

NC-1, 22 FEB 2024 to 21 MAR 2024

NC-1, 22 FEB 2024 to 21 MAR 2024