

(CONLE4.CONLE) 20366

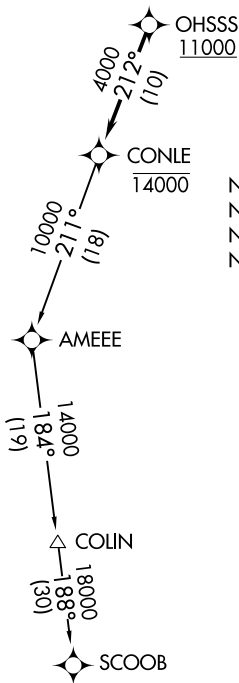
AL-5212 (FAA)

MONTGOMERY COUNTY AIRPARK (GAI)
GAITHERSBURG, MARYLAND

CONLE FOUR DEPARTURE (RNAV)

AWOS-3PT
128.275
CLNC DEL
121.6
UNICOM
123.075 (CTAF)
POTOMAC DEP CON
128.7 307.9

**TOP ALTITUDE:
ASSIGNED BY ATC**



NOTE: RNAV 1.
NOTE: DME/DME/IRU or GPS required.
NOTE: RADAR required.
NOTE: For turbojet aircraft only.

TAKEOFF MINIMUMS:
Rwy 14, 32: Standard.

NOTE: Chart not to scale.



DEPARTURE ROUTE DESCRIPTION

Climb on assigned heading to ATC assigned altitude, for vectors to cross OHSSS at or above 11000, then on track 212° to cross CONLE at or below 14000, then on assigned transition. Expect filed altitude within 10 minutes after departure.

COLIN TRANSITION (CONLE4.COLIN)
SCOOB TRANSITION (CONLE4.SCOOB)

CONLE FOUR DEPARTURE (RNAV)
(CONLE4.CONLE) 31DEC20

GAITHERSBURG, MARYLAND
MONTGOMERY COUNTY AIRPARK (GAI)

NE-3, 22 FEB 2024 to 21 MAR 2024

NE-3, 22 FEB 2024 to 21 MAR 2024