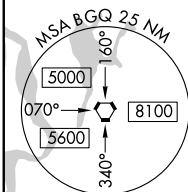
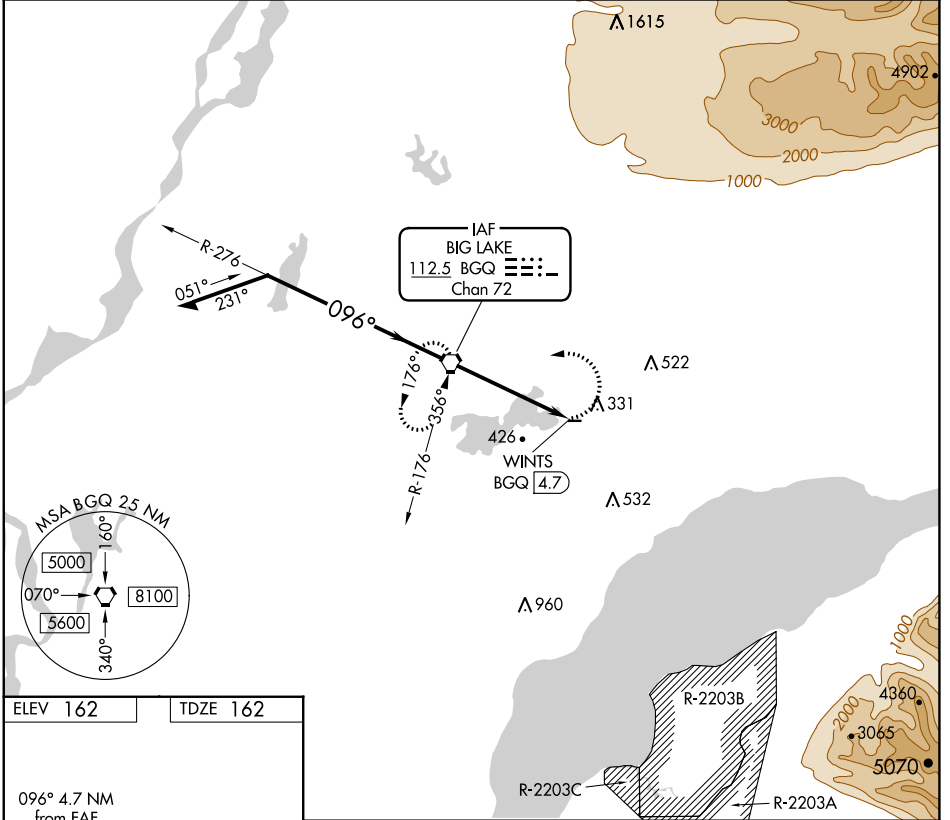


VORTAC BGQ 112.5 Chan 72	APP CRS 096°	Rwy Idg TDZE Apt Elev	2450 162 162
---------------------------------------	------------------------	-----------------------------	---

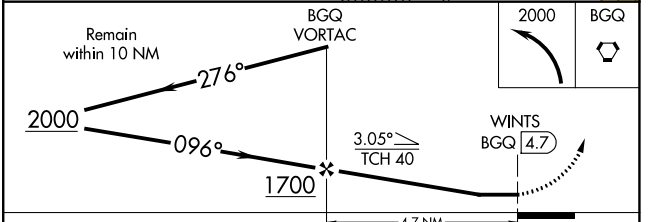
VOR RWY 7
BIG LAKE (BGQ) (PAGQ)

NA Procedure NA at night. Rwy 7 helicopter visibility reduction below 1 SM NA. Use Anchorage altimeter setting. MISSED APPROACH: Climbing left turn to 2000 direct BGQ VORTAC and hold, climb-in-hold to 2000.

ANC ASOS 135.5	ANCHORAGE APP CON 118.6	CTAF 122.80
--------------------------	-----------------------------------	-----------------------



ELEV 162	TDZE 162
----------	----------



MIRL Rwy 7-25

FAF to MAP 4.7 NM

Knots	60	90	120	150	180
Min:Sec	4:42	3:08	2:21	1:53	1:34

CATEGORY	A	B	C	D
S-7	980-1 818 (900-1)	980-1¼ 818 (900-1¼)	980-2½ 818 (900-2½)	NA
<input checked="" type="checkbox"/> CIRCLING	980-1¼	818 (900-1¼)	980-2½ 818 (900-2½)	NA

AK, 25 JAN 2024 to 21 MAR 2024

AK, 25 JAN 2024 to 21 MAR 2024