

WAAS CH <b>40307</b> <b>W33A</b>	APP CRS <b>326°</b>	Rwy ldg <b>6997</b> TDZE <b>14</b> Apt Elev <b>22</b>
--	------------------------	---

# RNAV (GPS) RWY 33

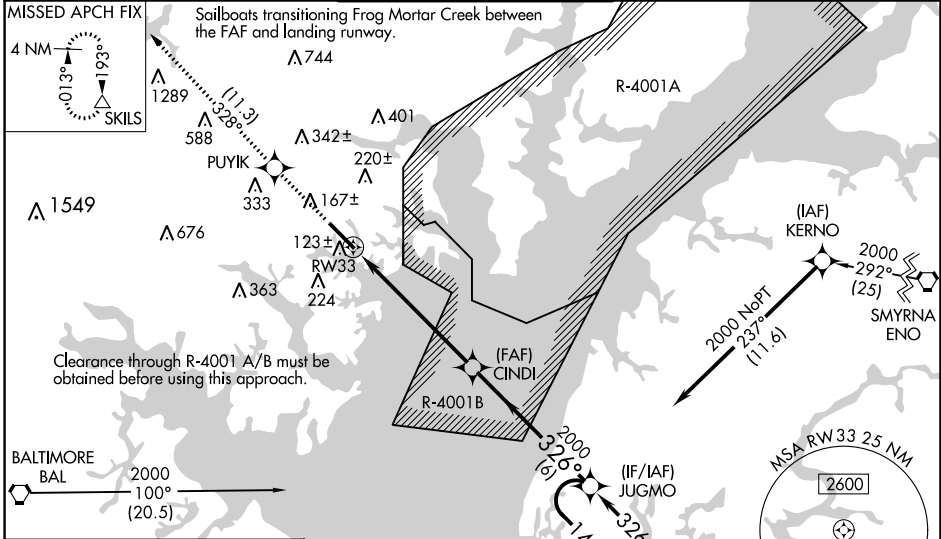
MARTIN STATE (MTN)

RNP APCH - GPS.

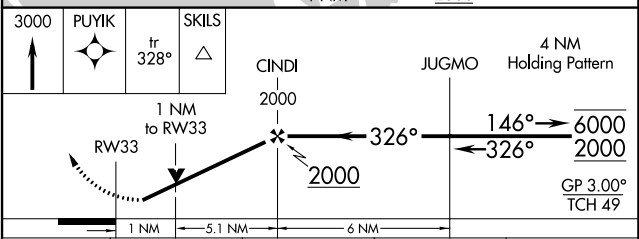
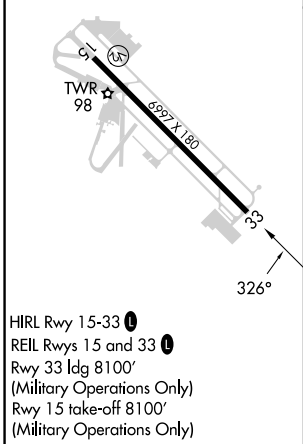
**⚠** Circling NA for Cat D northeast of Rwy 15-33. Baro-VNAV and VDP NA when using Baltimore/Washington Intl Thurgood Marshall altimeter setting. Rwy 33 helicopter visibility reduction below ¼ SM NA. For uncompensated Baro-VNAV systems, LNAV/VNAV NA below -15°C or above 54°C. When local altimeter setting not received, use Baltimore/Washington Intl Thurgood Marshall altimeter setting; increase LPV DA to 266 feet; increase LNAV/VNAV DA to 356 feet and all visibilities ½ SM; increase all MDAs 60 feet and LNAV visibility Cat C/D ¼ SM, and Circling visibility Cat C/D ¼ SM.

**MISSED APPROACH:**  
Climb to 3000 direct PUYIK and on track 328° to SKILS and hold.

ATIS <b>124.925</b>	POTOMAC APP CON <b>119.0 282.275</b>	MARTIN TOWER ★ <b>121.3 (CTAF) 0 254.425</b>	GND CON <b>121.8 253.4</b>	UNICOM <b>122.95</b>
------------------------	---	---	-------------------------------	-------------------------



ELEV <b>22</b>	TDZE <b>14</b>
----------------	----------------



CATEGORY	A	B	C	D
LPV DA		214-1	200 (200-1)	
LNAV/VNAV DA		304-1	290 (300-1)	
LNAV MDA		380-1	366 (400-1)	
<b>C</b> CIRCLING	540-1	518 (600-1)	580-1½ 558 (600-1½)	740-2¼ 718 (800-2¼)

NE-3, 22 FEB 2024 to 21 MAR 2024

NE-3, 22 FEB 2024 to 21 MAR 2024