

WAAS CH 42821 W08A	APP CRS 082°	Rwy Idg TDZE Apt Elev	3897 782 785
--	------------------------	-----------------------------	---

RNAV (GPS) RWY 8

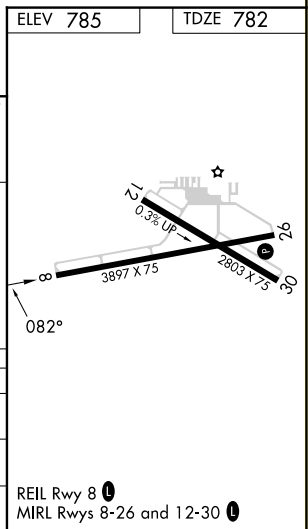
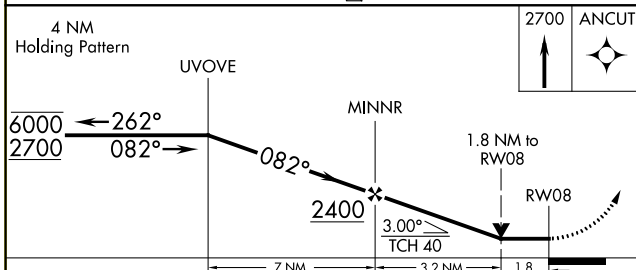
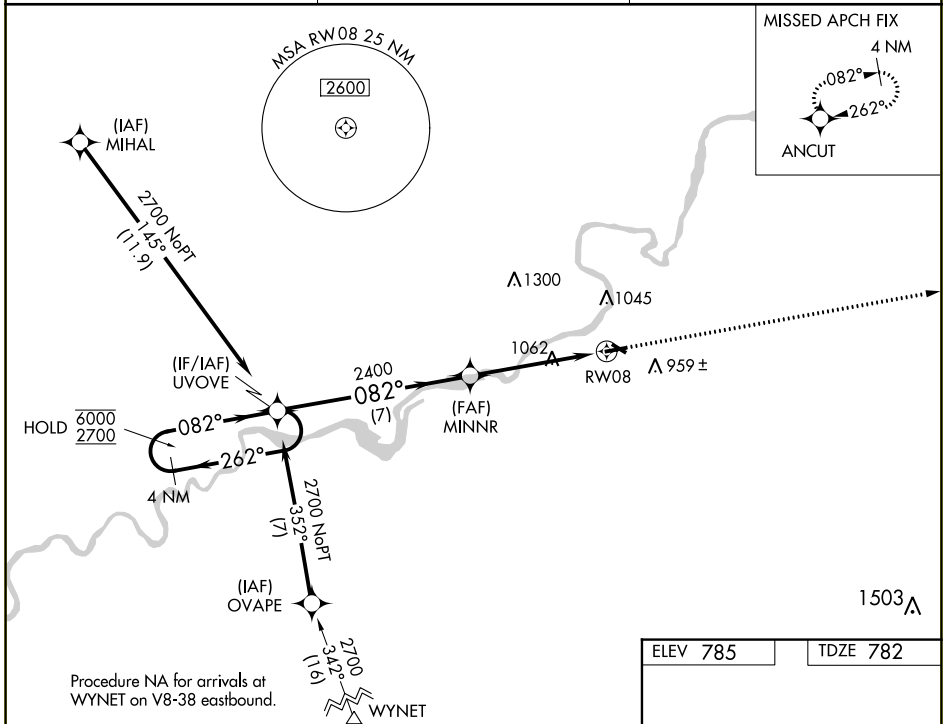
DIXON MUNI-CHARLES R WALGREEN FLD (C73)

RNP APCH - GPS.

⚠ Rwy 8 helicopter visibility reduction below $\frac{3}{4}$ SM NA. When local altimeter setting not received, use Rochelle altimeter setting and increase all MDAs 40 feet and Circling visibility Cat C $\frac{1}{4}$ SM. VDP NA when using Rochelle altimeter setting.

MISSED APPROACH: Climb to 2700 direct ANCUT and hold.

AWOS-AV 118.575	ROCKFORD APP CON 126.0 327.0	UNICOM 123.05 (CTAF) 0
---------------------------	--	----------------------------------



CATEGORY	A	B	C	D
LP MDA	1380-1	598 (600-1)	1380-1 $\frac{3}{4}$ 598 (600-1 $\frac{3}{4}$)	NA
LNAV MDA	1380-1	598 (600-1)	1380-1 $\frac{3}{4}$ 598 (600-1 $\frac{3}{4}$)	NA
CIRCLING	1380-1 595 (600-1)	1400-1 615 (700-1)	1420-1 $\frac{3}{4}$ 635 (700-1 $\frac{3}{4}$)	NA

EC-3, 22 FEB 2024 to 21 MAR 2024

EC-3, 22 FEB 2024 to 21 MAR 2024