

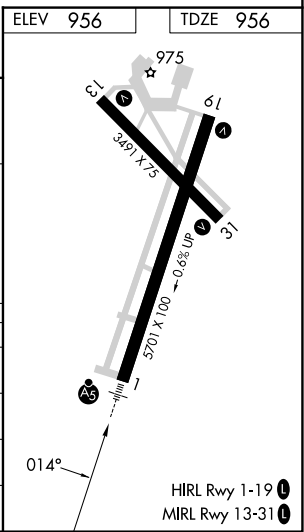
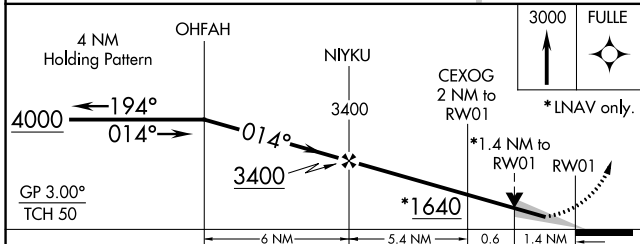
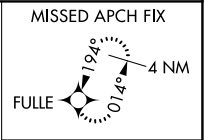
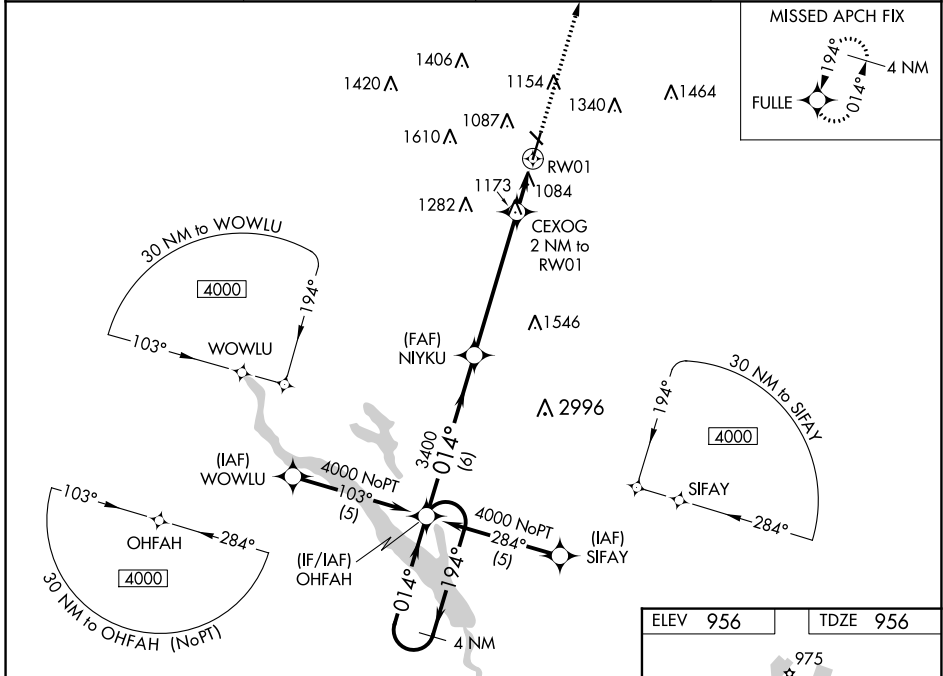
WAAS CH <b>72717</b> <b>W01A</b>	APP CRS <b>014°</b>	Rwy Idg TDZE Apt Elev	<b>5701</b> <b>956</b> <b>956</b>
--	------------------------	-----------------------------	---

# RNAV (GPS) RWY 1

AMES MUNI (AMW)

RNP APCH. ▼ ❄️ -27°C For uncompensated Baro-VNAV systems, LNAV/VNAV NA below -16°C (4°F) or above 54°C (130°F). For inop MALSRS, increase LNAV Cats A, B visibility to 1 mile.	MALSRS AS	MISSED APPROACH: Climb to 3000 direct FULLE and hold.
---	--------------	---

ASOS <b>132.025</b>	DES MOINES APP CON <b>123.9 307.15</b>	CLNC DEL <b>126.0</b>	UNICOM <b>122.7 (CTAF) 0</b>
------------------------	---	--------------------------	---------------------------------



CATEGORY	A	B	C	D
LPV DA	1261-3/4	305 (400-3/4)		NA
LNAV/VNAV DA	1364-1	408 (500-1)		NA
LNAV MDA	1440-3/4	484 (500-3/4)		NA
CIRCLING	1440-1 484 (500-1)	1460-1 504 (600-1)	1640-2 684 (700-2)	NA

NC-3, 22 FEB 2024 to 21 MAR 2024

NC-3, 22 FEB 2024 to 21 MAR 2024