

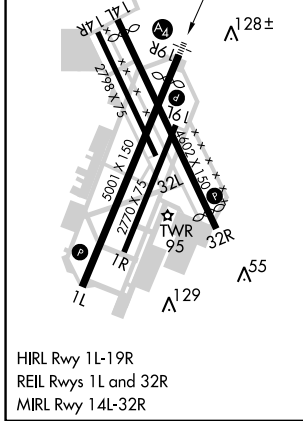
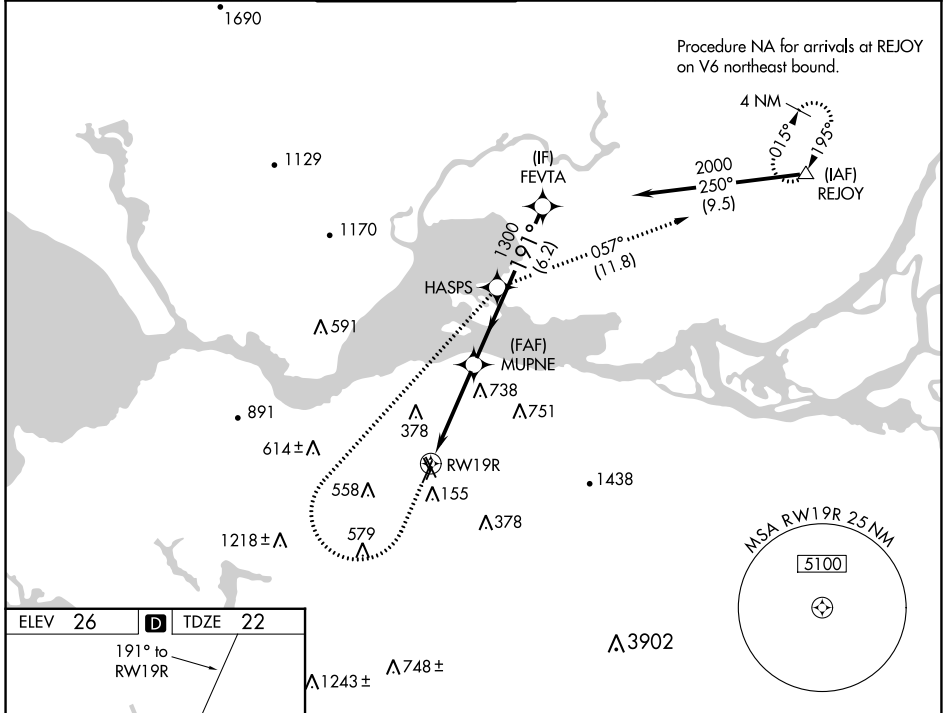
WAAS CH <b>86424</b> <b>W19A</b>	APP CRS <b>191°</b>	Rwy Idg TDZE Apt Elev	<b>4400</b> <b>22</b> <b>26</b>
--	------------------------	-----------------------------	---------------------------------------

# RNAV (GPS) RWY 19R

BUCHANAN FLD (CCR)

RNP APCH - GPS.	MALS	MISSED APPROACH: (Do not exceed 190K until HASPS) Climb to 500 then climbing right turn to 3000 direct HASPS then on track 057° direct REJOY and hold.
<p>⚠ Circling to Rwy 1L, 1R, 32R, 32L and 19L NA at night. Circling NA west of Rwy 1L and 19R. Rwy 19R helicopter visibility reduction below ¾ SM NA. Inop table does not apply to LPV all Cats. For inop ALS, increase LNAV Cat C and D visibility to 3 SM.</p>		

ATIS <b>124.7</b>	TRAVIS APP CON <b>119.9 322.325</b>	CONCORD TOWER* <b>119.7 (CTAF) 257.8</b>	GND CON <b>121.9</b>	CLNC DEL <b>118.75</b>	UNICOM <b>122.95</b>
----------------------	--	---	-------------------------	---------------------------	-------------------------



ELEV 26	D	TDZE 22		
191° to RWY 19R				
500	3000	HASPS	tr 057°	REJOY
VGSi and RNAV glidepath not coincident (VGSi Angle 3.00/TCH 22).				
RWY 19R		MUPNE	FEVTA	
2.9 NM to RWY 19R		1300	2000	
		1300		GP 3.00°
				TCH 45
2.9 NM		1 NM	6.2 NM	
CATEGORY	A	B	C	D
LPV DA	298-¾		276 (300-¾)	
LNAV MDA	980-1 958 (1000-1)	980-1¼ 958 (1000-1¼)	980-2½ 958 (1000-2½)	
CIRCLING	980-1¼ 954 (1000-1¼)	980-1½ 954 (1000-1½)	980-3 954 (1000-3)	1300-3 1274 (1300-3)

SW-2, 22 FEB 2024 to 21 MAR 2024

SW-2, 22 FEB 2024 to 21 MAR 2024