

WAAS CH 99305	APP CRS 284°	Rwy Idg 5001 TDZE 309 Apt Elev 310
W28A		

RNAV (GPS) RWY 28

CRISP COUNTY-CORDELE (CKF)

RNP APCH-GPS.

⚠ For uncompensated Baro-VNAV systems, LNAV/VNAV NA below -1.5°C or above 54°C. Rwy 28 helicopter visibility reduction below 1 SM NA. Straight-in and Circling Rwy 28 NA at night.

MISSED APPROACH: Climb to 2000 direct BAVCA and hold.

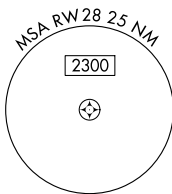
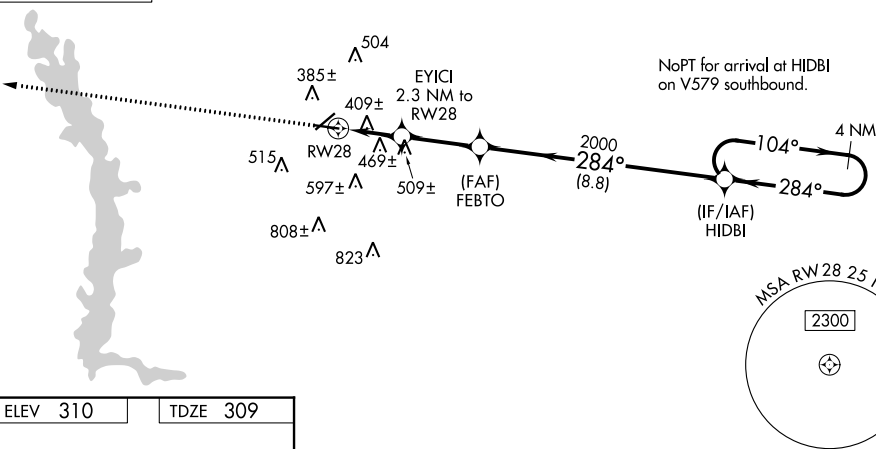
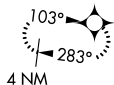
AWOS-3PT
119.325

JACKSONVILLE CENTER
125.75 363.075

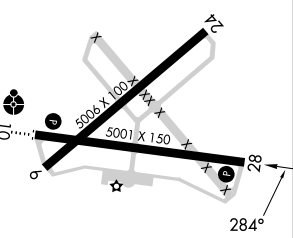
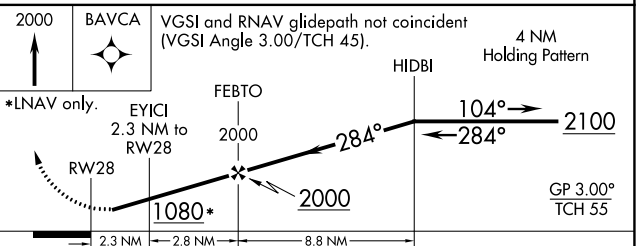
UNICOM
123.050 (CTAF) ①

△ 833±

MISSED APCH FIX
BAVCA



ELEV 310	TDZE 309
----------	----------



MIRL Rwy 10-28 ①
REIL Rwy 10 and 28 ①

CATEGORY	A	B	C	D
LPV DA	669-1⅛ 360 (400-1⅛)			
LNAV/VNAV DA	769-1½ 460 (500-1½)			
LNAV MDA	720-1	411 (500-1)	720-1⅛	411 (500-1⅛)
<input checked="" type="checkbox"/> CIRCLING	820-1	510 (600-1)	1080-2¼ 770 (800-2¼)	1160-2¾ 850 (900-2¾)

SE-4, 22 FEB 2024 to 21 MAR 2024

SE-4, 22 FEB 2024 to 21 MAR 2024