

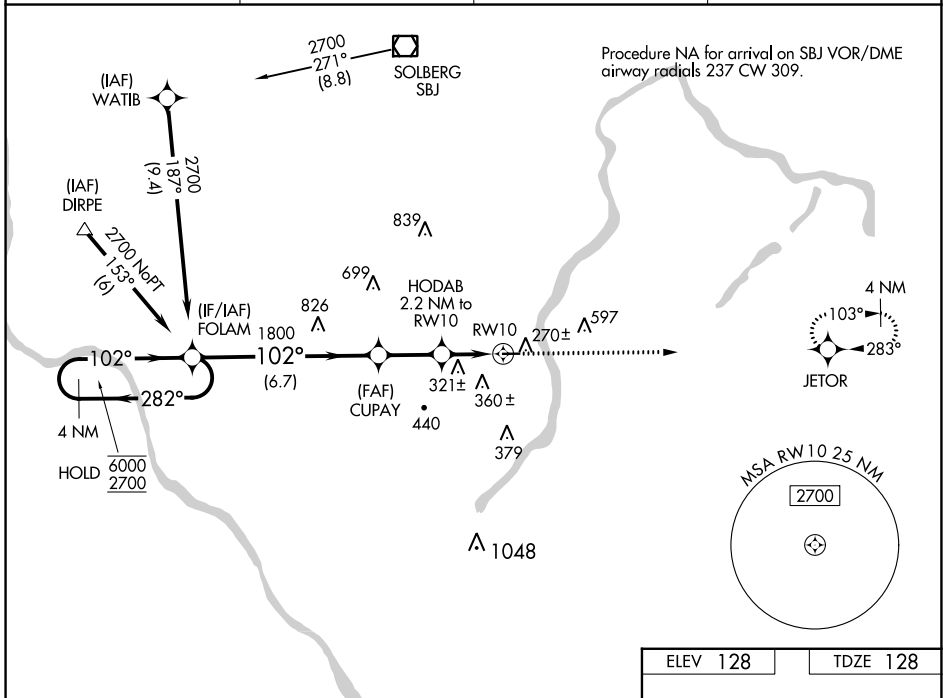
WAAS CH 86843 W10A	APP CRS 102°	Rwy Idg TDZE 128 Apt Elev 128	3499
--	------------------------	---	-------------

RNAV (GPS) RWY 10

PRINCETON (39N)

RNP APCH - GPS.	MISSED APPROACH: Climb to 2700 direct JETOR and hold.
<p>▼ Rwy 10 helicopter visibility reduction below 3/4 SM NA. Circling Rwy 28 NA at night.</p> <p>▲ NA Baro-VNAV NA. Use Trenton altimeter setting.</p>	

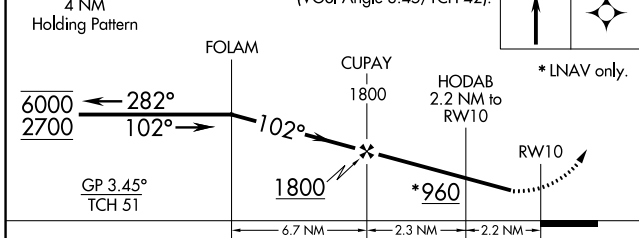
TTN ASOS 126.775	NEW YORK APP CON 132.8 379.9	UNICOM 122.725 (CTAF)	123.05 0
----------------------------	--	---------------------------------	-----------------



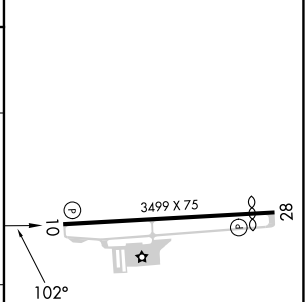
NE-2, 22 FEB 2024 to 21 MAR 2024

NE-2, 22 FEB 2024 to 21 MAR 2024

4 NM Holding Pattern	VGSI and descent angles not coincident (VGSI Angle 3.45/TCH 42).	2700	JETOR
----------------------	---	------	-------



ELEV 128	TDZE 128
----------	----------



CATEGORY	A	B	C	D
LPV DA		441-1	313 (400-1)	
LNAV/VNAV DA		533-1 1/8	405 (500-1 1/8)	
LNAV MDA	580-1	452 (500-1)	580-1 3/8	452 (500-1 3/8)
CIRCLING	760-1 632 (700-1)	840-1 712 (800-1)	940-2 1/2 812 (900-2 1/2)	1000-2 3/4 872 (900-2 3/4)

MIRL Rwy 10-28 0
REIL Rwy 10 0