


LOC I-OSU 108.5	APP CRS 092°	Rwy Idg TDZE Apt Elev	5004 905 905
---------------------------	------------------------	-----------------------------	---

ILS or LOC RWY 9R

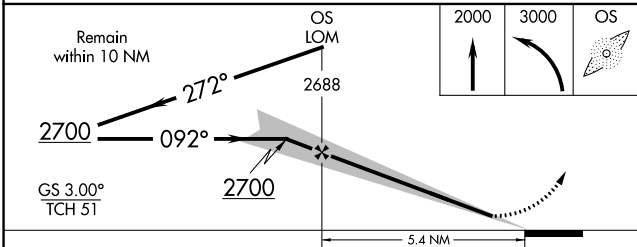
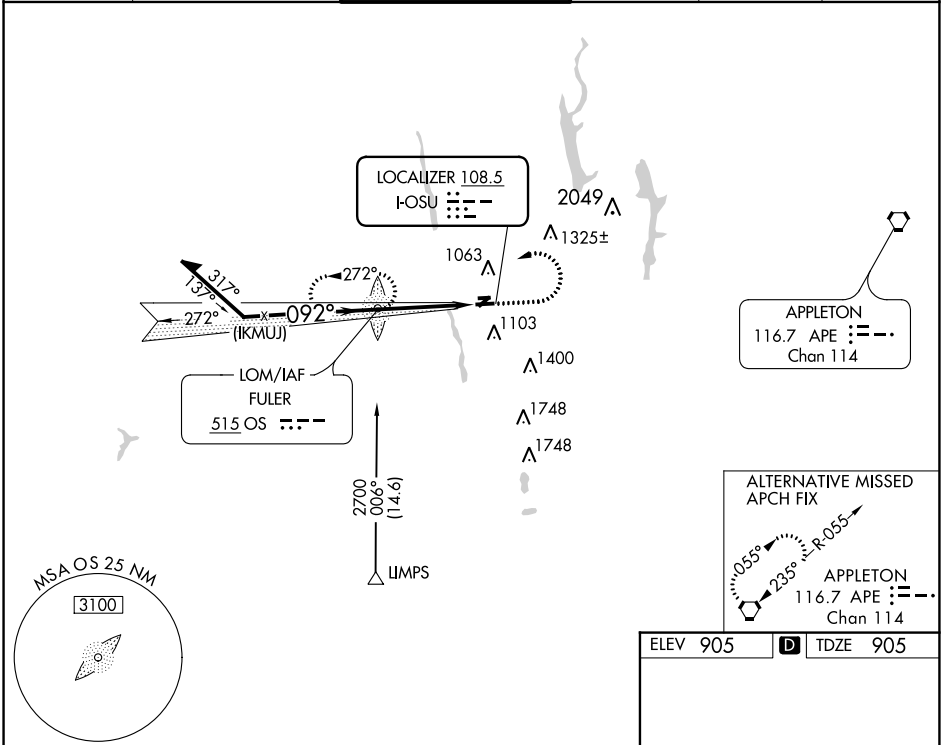
OHIO STATE UNIVERSITY (OSU)

ADF required for procedure entry. ADF required.

⚠ When local altimeter setting not received, use John Glenn Columbus Intl altimeter setting; increase DA to 1140 feet; increase all MDAs 40 feet and S-9R visibility Cat C ½ SM and Cat D and Circling Cat D ¼ SM. Circling Rwy 23 NA at night.

MALSR  MISSED APPROACH: Climb to 2000 then climbing left turn to 3000 direct FULER LOM and hold.

ATIS 121.35	COLUMBUS APP CON 125.95 317.775	STATE TOWER ★ 118.8 (CTAF) 254.325	GND CON 121.7	CLNC DEL 121.7	UNICOM 122.95
-----------------------	---	---	-------------------------	--------------------------	-------------------------



ELEV 905	D TDZE 905
----------	-------------------

REIL Rwy 27L
HIRL Rwy 9R-27L
MIRL Rwys 9L-27R

FAF to MAP 5.4 NM

Knots	60	90	120	150	180
Min:Sec	5:24	3:36	2:42	2:10	1:48

CATEGORY	A	B	C	D
S-ILS 9R	1105-½ 200 (200-½)			
S-LOC 9R	1420-½	515 (600-½)	1420-1	515 (600-1)
CIRCLING	1420-1	515 (600-1)	1420-1½ 515 (600-1½)	1680-2½ 775 (800-2½)

EC-2, 22 FEB 2024 to 21 MAR 2024

EC-2, 22 FEB 2024 to 21 MAR 2024