

LOM OS 515	APP CRS 093°	Rwy Idg TDZE Apt Elev	5004 905 905
----------------------	------------------------	-----------------------------	---

NDB RWY 9R

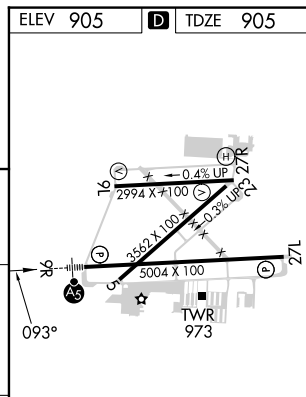
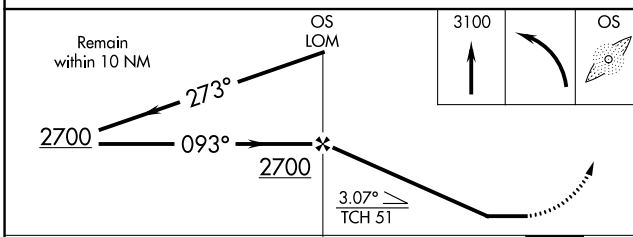
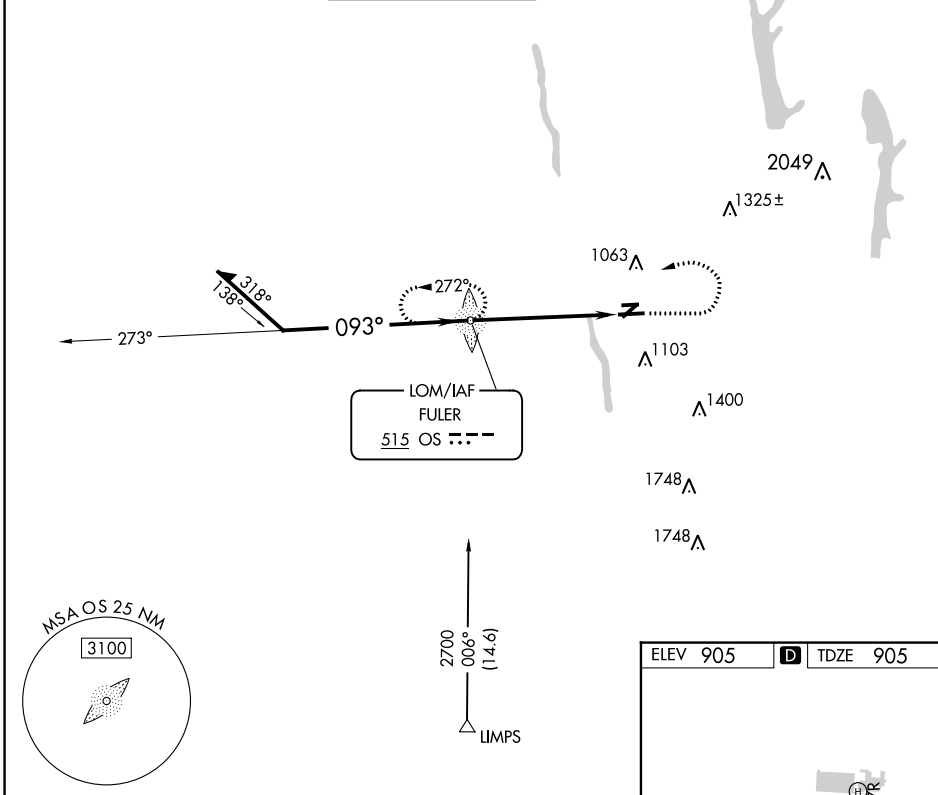
OHIO STATE UNIVERSITY (OSU)

⚠ When local altimeter setting not received, use John Glenn Columbus Intl altimeter setting and increase all MDAs 40 feet and S-9R visibility Cat C ¼ SM and Cat D and Circling Cat D ½ SM. Circling Rwy 23 NA at night.

MALSRL

MISSED APPROACH: Climb to 3100 then left turn direct OS LOM and hold.

ATIS 121.35	COLUMBUS APP CON 125.95 317.775	STATE TOWER* 118.8 (CTAF) 254.325	GND CON 121.7	CLNC DEL 121.7	UNICOM 122.95
-----------------------	---	---	-------------------------	--------------------------	-------------------------



CATEGORY	A	B	C	D
S-9R	1460-¾ 555 (600-¾)		1460-1½ 555 (600-1½)	
CIRCLING	1460-1 555 (600-1)		1460-1⅝ 555 (600-1⅝)	1680-2½ 775 (800-2½)

ELEV 905	D TDZE 905
REIL Rwy 27L HIRL Rwy 9R-27L MIRL Rwys 9L-27R	
FAF to MAP 5.4 NM	
Knots	60 90 120 150 180
Min:Sec	5:24 3:36 2:42 2:10 1:48

EC-2, 22 FEB 2024 to 21 MAR 2024

EC-2, 22 FEB 2024 to 21 MAR 2024