

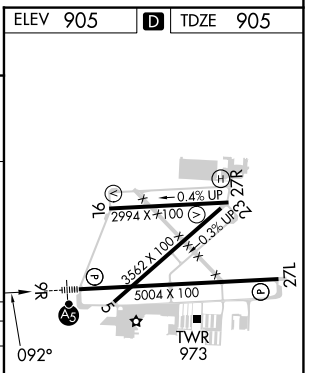
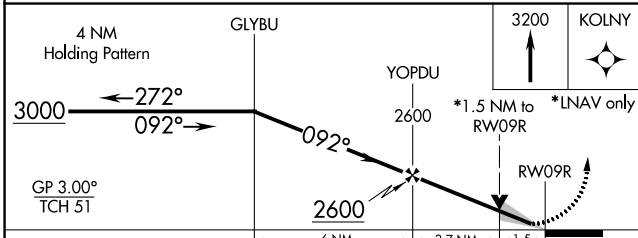
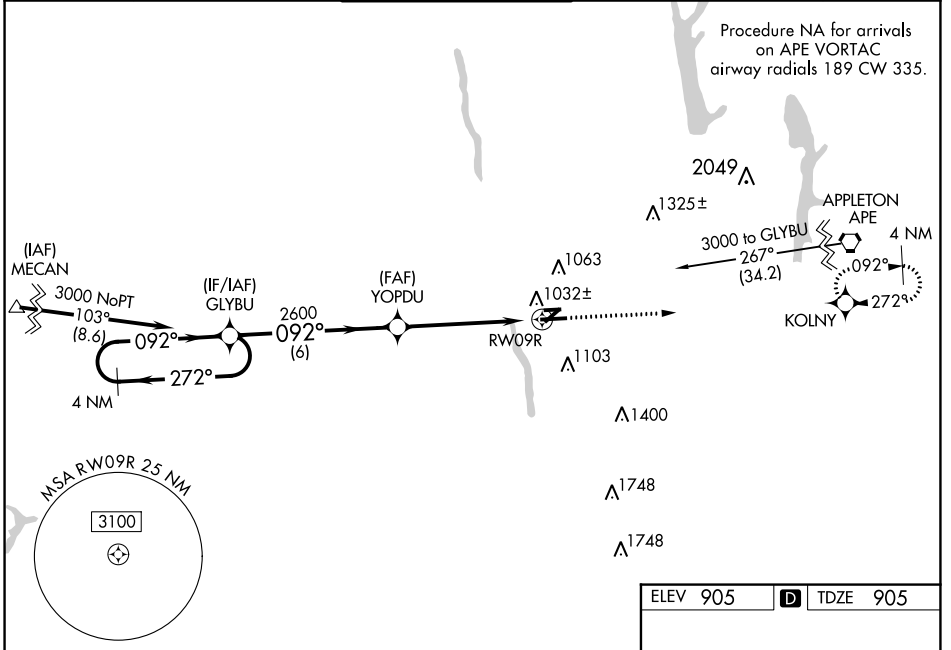
| | | | |
|--|------------------------|-----------------------------|---|
| WAAS CH 86420 W09A | APP CRS 092° | Rwy Idg TDZE Apt Elev | 5004 905 905 |
|--|------------------------|-----------------------------|---|

RNAV (GPS) RWY 9R

OHIO STATE UNIVERSITY (OSU)

| | | | |
|---|--|-------------|---|
| RNP APCH. | | MALSR AS | MISSED APPROACH: Climb to 3200 direct KOLNY and hold. |
| <p>▼ Baro-VNAV NA when using John Glenn Columbus Intl altimeter setting. For uncompensated Baro-VNAV systems, LNAV/VNAV NA below -16°C or above 38°C. VDP NA with John Glenn Columbus Intl altimeter setting. When local altimeter setting not received, use John Glenn Columbus Intl altimeter setting; increase LPV DA to 1140 feet; increase LNAV/VNAV DA to 1227 feet; increase all MDAs 40 feet and LNAV visibility Cat C 1/8 SM, Cat D 1/4 SM and Circling Cat D 1/4 SM. Circling Rwy 23 NA at night. For inop ALS, increase LNAV/VNAV visibility all Cats to 1/2 SM.</p> | | | |

| | | | | | |
|-----------------------|---|--|-------------------------|--------------------------|-------------------------|
| ATIS 121.35 | COLUMBUS APP CON 125.95 317.775 | STATE TOWER * 118.8 (CTAF) 0 254.325 | GND CON 121.7 | CLNC DEL 121.7 | UNICOM 122.95 |
|-----------------------|---|--|-------------------------|--------------------------|-------------------------|



| CATEGORY | A | B | C | D |
|--------------|----------|---------------|-------------------------------|-------------------------------|
| LPV DA | | 1105-1/2 | 200 (200-1/2) | |
| LNAV/VNAV DA | | 1192-1/2 | 287 (300-1/2) | |
| LNAV MDA | 1420-1/2 | 515 (600-1/2) | 1420-1 | 515 (600-1) |
| CIRCLING | 1420-1 | 515 (600-1) | 1420-1 1/2 515 (600-1 1/2) | 1680-2 1/2 775 (800-2 1/2) |

EC-2, 22 FEB 2024 to 21 MAR 2024

EC-2, 22 FEB 2024 to 21 MAR 2024