

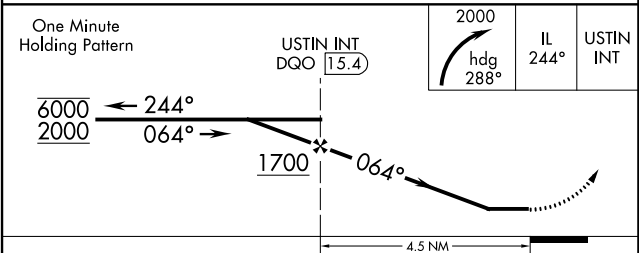
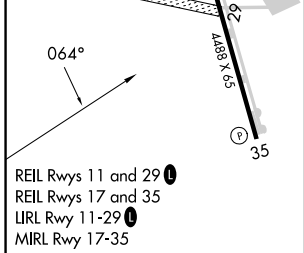
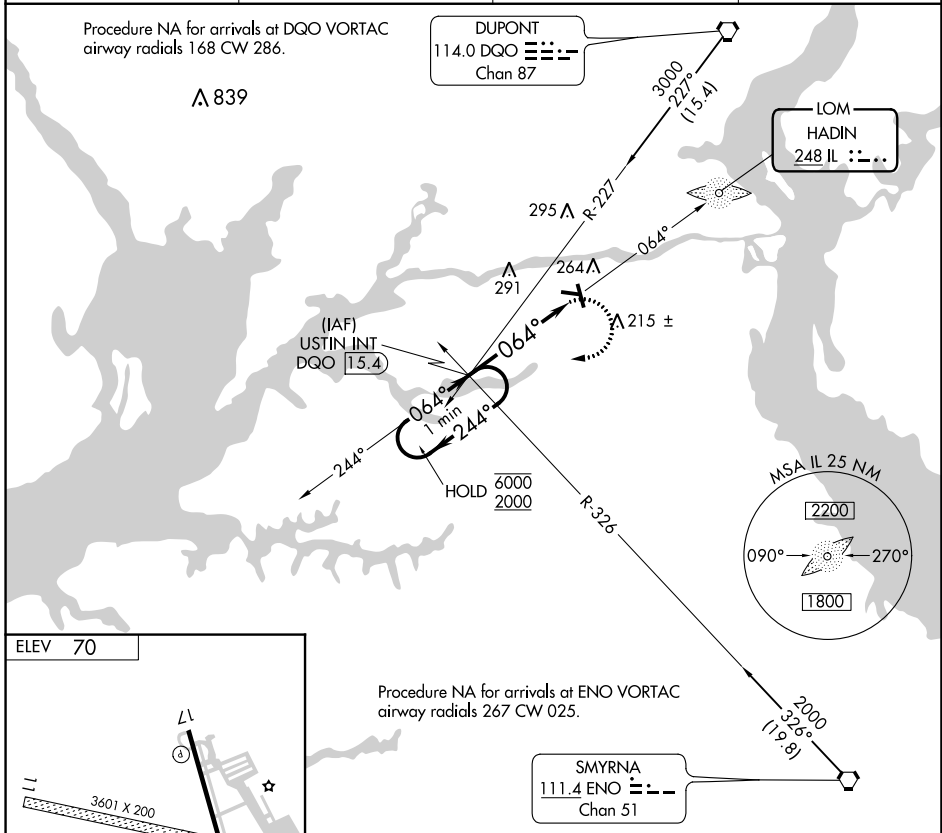
LOM IL 248	APP CRS 064°	Rwy Idg TDZE Apt Elev	N/A N/A 70
----------------------	------------------------	-----------------------------	---------------------------------------

NDB-A
SUMMIT (E.V.Y)

⚠ Circling NA to Rws 11 and 29. Circling Rwy 17 NA at night. When local altimeter setting not received, use Wilmington altimeter setting and increase all MDAs 40 feet.

⚠ MISSED APPROACH: Climbing right turn to 2000 on heading 288° and 244° bearing from HADIN LOM to USTIN INT/DQO 15.4 DME and hold, continue climb-in-hold to 2000.

AWOS-3 132.325	PHILADELPHIA APP CON 118.35 323.1	UNICOM 122.725 (CTAF)	123.5 0
--------------------------	---	---------------------------------	-----------------------



FAF to MAP 4.5 NM					
Knots	60	90	120	150	180
Min:Sec	4:30	3:00	2:15	1:48	1:30
CATEGORY	A	B	C	D	
CIRCLING	660-1 590 (600-1)	700-1 630 (700-1)	700-1¾ 630 (700-1¾)	700-2 630 (700-2)	

NE-3, 22 FEB 2024 to 21 MAR 2024

NE-3, 22 FEB 2024 to 21 MAR 2024