

WAAS CH <b>40302</b> <b>W35A</b>	APP CRS <b>355°</b>	Rwy Idg TDZE Apt Elev	<b>4488</b> <b>70</b> <b>70</b>
--	------------------------	-----------------------------	---------------------------------------

# RNAV (GPS) Z RWY 35

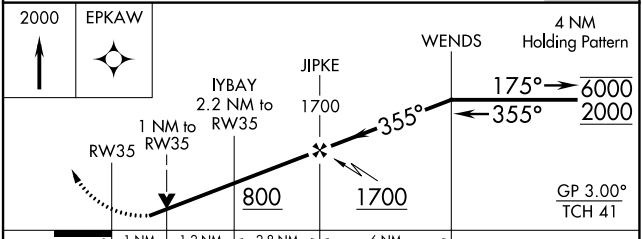
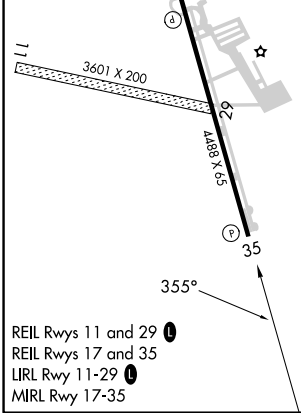
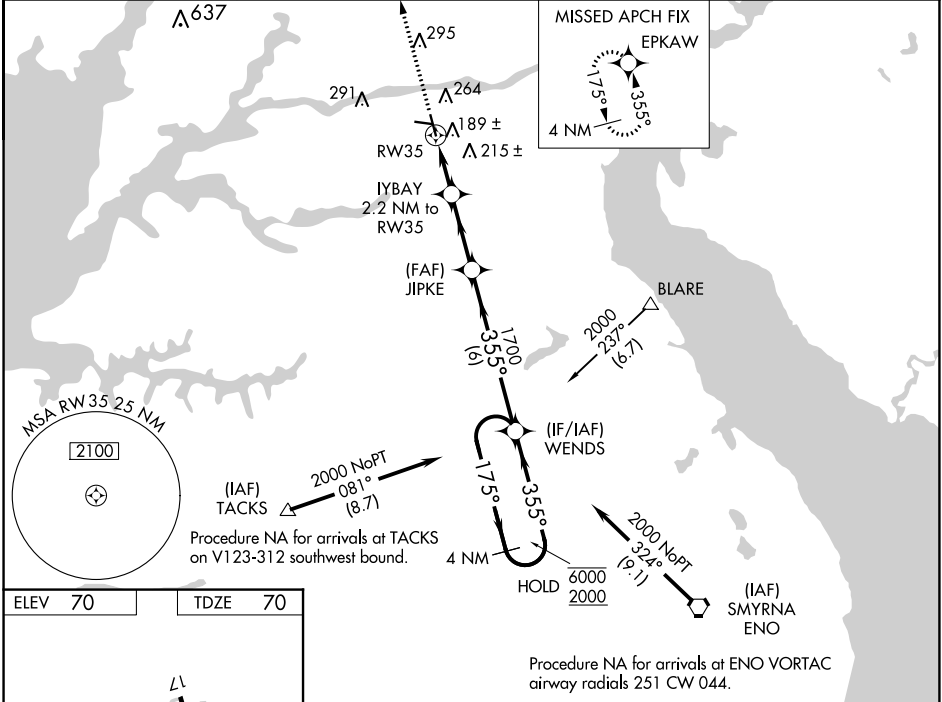
SUMMIT (EVY)

RNP APCH - GPS.

**⚠** Rwy 35 helicopter visibility reduction below 3/4 SM NA. For uncompensated Baro-VNAV systems, LNAV/VNAV NA below -15°C or above 54°C.

MISSED APPROACH: Climb to 2000 direct EPKAW and hold.

AWOS-3 <b>132.325</b>	PHILADELPHIA APP CON <b>118.35 323.1</b>	UNICOM <b>122.725</b> (CTAF)	<b>123.5</b> <b>0</b>
--------------------------	---	---------------------------------	-----------------------



CATEGORY	A	B	C	D
LPV DA		320-3/4	250 (300-3/4)	
LNAV/VNAV DA		385-7/8	315 (400-7/8)	
LNAV MDA		440-1	370 (400-1)	

NE-3, 22 FEB 2024 to 21 MAR 2024

NE-3, 22 FEB 2024 to 21 MAR 2024