

KENT, OHIO

AL-5397 (FAA)

24025

VOR/DME ACO <b>114.4</b> Chan <b>91</b>	APP CRS <b>289°</b>	Rwy Idg TDZE Apt Elev <b>N/A</b> <b>N/A</b> <b>1134</b>
-----------------------------------------------	------------------------	------------------------------------------------------------------------

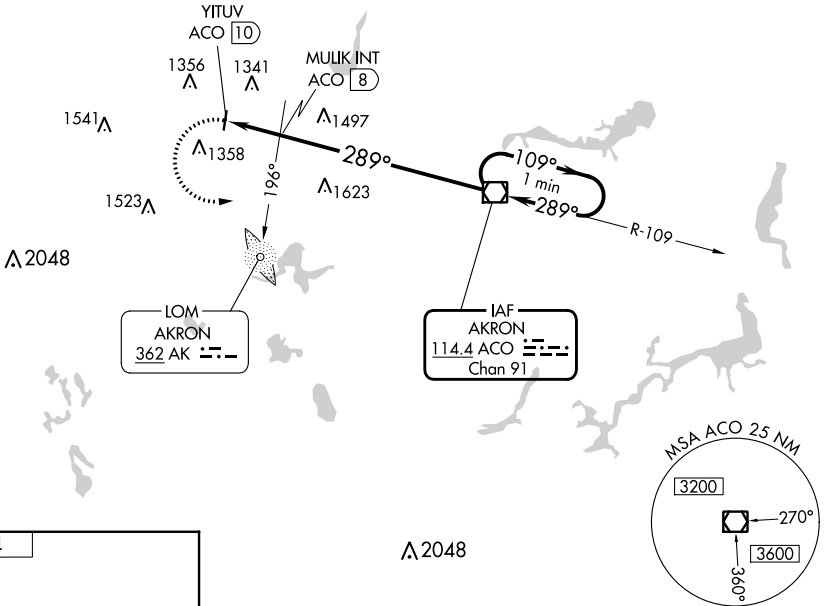
# VOR-A

## KENT STATE UNIVERSITY (1G3)

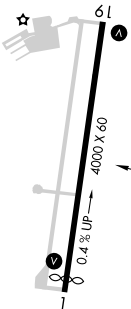
**▼** When local altimeter setting not received, use Akron Fulton  
**▲** NA Init altimeter setting.

MISSED APPROACH: Climbing left turn to  
3000 direct ACO VOR/DME and hold.

AWOS-2 <b>119.15</b>	AKR ASOS <b>126.825</b>	CLEVELAND APP CON ★ <b>125.5 371.875</b>	CLNC DEL <b>125.65</b>	UNICOM <b>122.725</b> (CTAF)	<b>122.9 0</b>
-------------------------	----------------------------	---------------------------------------------	---------------------------	---------------------------------	----------------



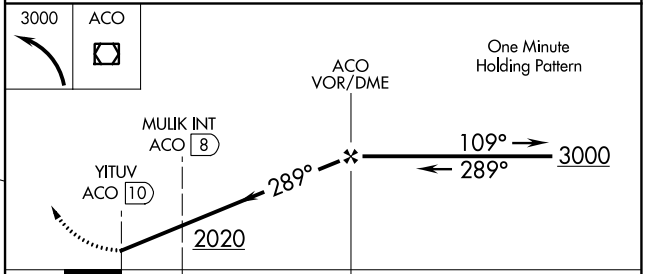
ELEV 1134



MIRL Rwy 1-19 **0**  
 REIL Rwys 1 and 19 **0**

FAF to MAP 10 NM

Knots	60	90	120	150	180
Min:Sec	10:00	6:40	5:00	4:00	3:20



CATEGORY	A	B	C	D
<b>C</b> CIRCLING	2020-1¼	886 (900-1¼)	2020-2¾ 886 (900-2¾)	NA
MULIK FIX MINIMUMS (ADF OR DME REQUIRED)				
<b>C</b> CIRCLING	1760-1	626 (700-1)	1760-1¾ 626 (700-1¾)	NA

KENT, OHIO  
 Amdt 14A 14JUL22

41°09'N-81°25'W

## KENT STATE UNIVERSITY (1G3)

# VOR-A

EC-2, 22 FEB 2024 to 21 MAR 2024

EC-2, 22 FEB 2024 to 21 MAR 2024