

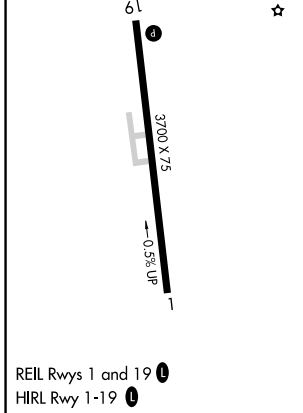
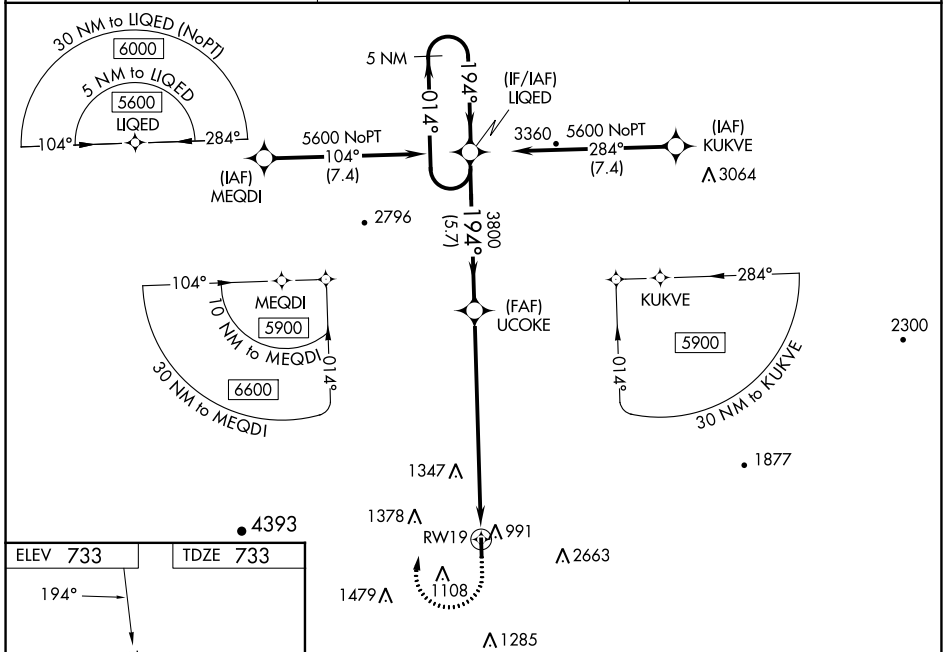
| | | | |
|--|------------------------|-----------------------------|---|
| WAAS CH 97531 W19B | APP CRS 194° | Rwy Idg TDZE Apt Elev | 3700 733 733 |
|--|------------------------|-----------------------------|---|

RNAV (GPS) Z RWY 19

MORRISVILLE-STOWE STATE (MVL)

| | |
|--|---|
| RNP APCH - GPS. | MISSED APPROACH: (Do not exceed 165K until LIQED) Climb to 2200 then climbing right turn to 5600 direct LIQED and hold, continue climb-in-hold to 5600. Missed approach requires minimum climb of 325 feet per NM to 3000; if unable to meet climb gradient, see RNAV (GPS) Y Rwy 19. |
| <p>⚠ Circling NA for Cat C E of Rwy 1-19. VDP NA when using Burlington altimeter setting. Rwy 19 helicopter visibility reduction below 3/4 SM NA. When local altimeter setting not received, use Burlington altimeter setting: increase LPV DA to 1380 feet and all visibilities 3/4 SM. Increase LNAV/VNAV DA to 1690 feet and all visibilities 1/2 SM. Increase all MDAs 120 feet. Baro-VNAV NA.</p> | |

| | | |
|------------------------|-------------------------------------|---------------------------------|
| ASOS 135.625 | BOSTON CENTER 135.7 282.2 | UNICOM 122.8 (CTAF) 0 |
|------------------------|-------------------------------------|---------------------------------|



| | | | | |
|-------------------|---------------------------|---------------------------|-------------------------|----|
| 2200 | 5600 | LIQED | 5 NM Holding Pattern | |
| *LNAV only | *2.7 NM to RWY19 | UCOKE 3800 | LIQED | |
| RWY19 | 2.7 NM | 5.5 NM | 5.7 NM | |
| 2200 | 5600 | LIQED | 5600 | |
| | | | GP 3.50° TCH 31 | |
| CATEGORY | A | B | C | D |
| LPV DA | 1270-1½ | 537 (600-1½) | | NA |
| LNAV/VNAV DA | 1580-2½ | 847 (900-2½) | | NA |
| LNAV MDA | 1760-1¼ 1027 (1100-1¼) | 1760-1½ 1027 (1100-1½) | 1760-3 1027 (1100-3) | NA |
| C CIRCLING | 1760-1¼ 1027 (1100-1¼) | 1780-1½ 1047 (1100-1½) | 1980-3 1247 (1300-3) | NA |

NE-1, 22 FEB 2024 to 21 MAR 2024

NE-1, 22 FEB 2024 to 21 MAR 2024