

APP CRS	Rwy Idg	6203
307°	TDZE	4840
	Apt Elev	4849

RNAV (GPS) RWY 31

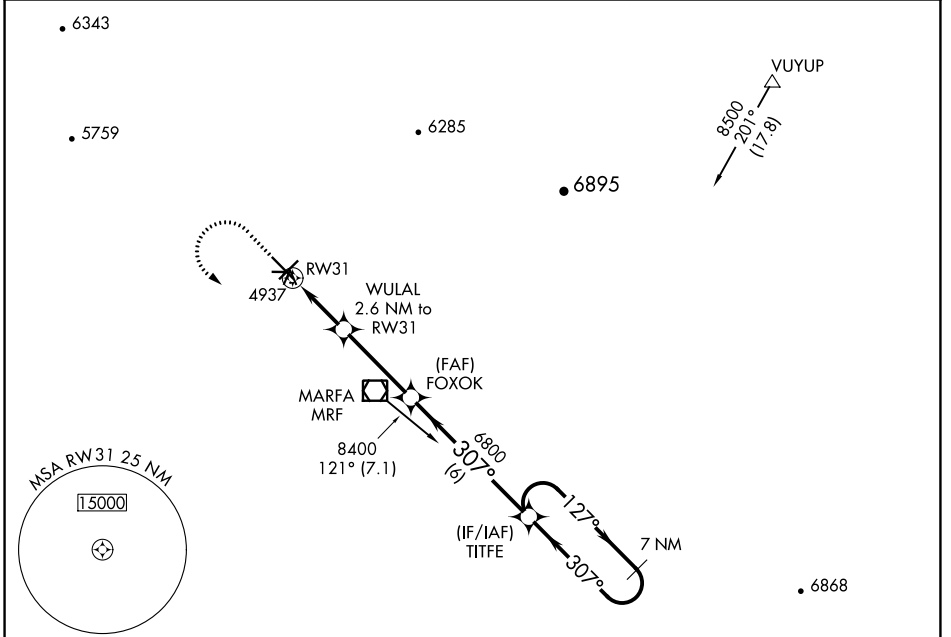
MARFA MUNI (MRF)

RNP APCH-GPS.

▼ When local altimeter setting not received, procedure NA.
 ▲ Circling NA to Rwy 9, 27.

MISSED APPROACH: Climb to 5300 then climbing left turn to 9000 direct TITFE and hold, continue climb-in-hold to 9000.

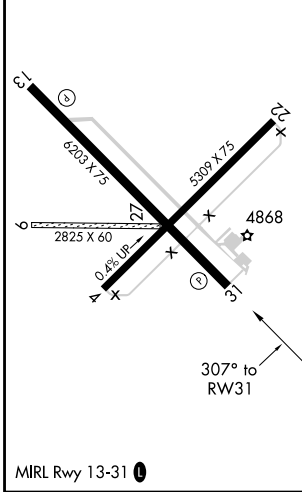
AWOS-3PT 134.025	ALBUQUERQUE CENTER 135.875 292.15	UNICOM 122.8 (CTAF)
----------------------------	---	-------------------------------



SC-3, 22 FEB 2024 to 21 MAR 2024

SC-3, 22 FEB 2024 to 21 MAR 2024

ELEV 4849	TDZE 4840
------------------	------------------



5300	9000	TITFE	TITFE	7 NM Holding Pattern
WULAL 2.6 NM to RW31		FOXOK	8400	127°
1 NM to RW31	3.00° TCH 50	6800	307°	8400
5700	6800	8400	VGS1 and descent angles not coincident (VGS1 Angle 3.00/ TCH 36).	
1 NM	1.6 NM	3.4 NM	6 NM	
CATEGORY	A	B	C	D
LNAV MDA	5200-1 360 (400-1)			
C CIRCLING	5280-1 431 (500-1)	5300-1 451 (500-1)	5440-1½ 591 (600-1½)	5780-3 931 (1000-3)