

# EL DORADO ONE DEPARTURE

ATIS  
128.375  
CLNC DEL  
119.45  
GND CON  
121.8 239.0  
HOOKS TOWER★  
127.4 354.1 (EAST)  
118.4 (CTAF) 354.1 (WEST)  
HOUSTON DEP CON  
119.7 281.4

**TOP ALTITUDE:  
ASSIGNED BY ATC**

EL DORADO  
115.5 ELD  
Chan 102  
N33°15.37'-W92°44.64'  
L-17, H-6

NOTE: RADAR required.  
NOTE: For aircraft destined KMEM  
or filed via Q32 or J42.

LUFKIN  
112.1 LFK  
Chan 58

ENJOY  
N31°16.73'  
W94°19.82'

MUSIQ  
N30°33.17'  
W94°53.53'

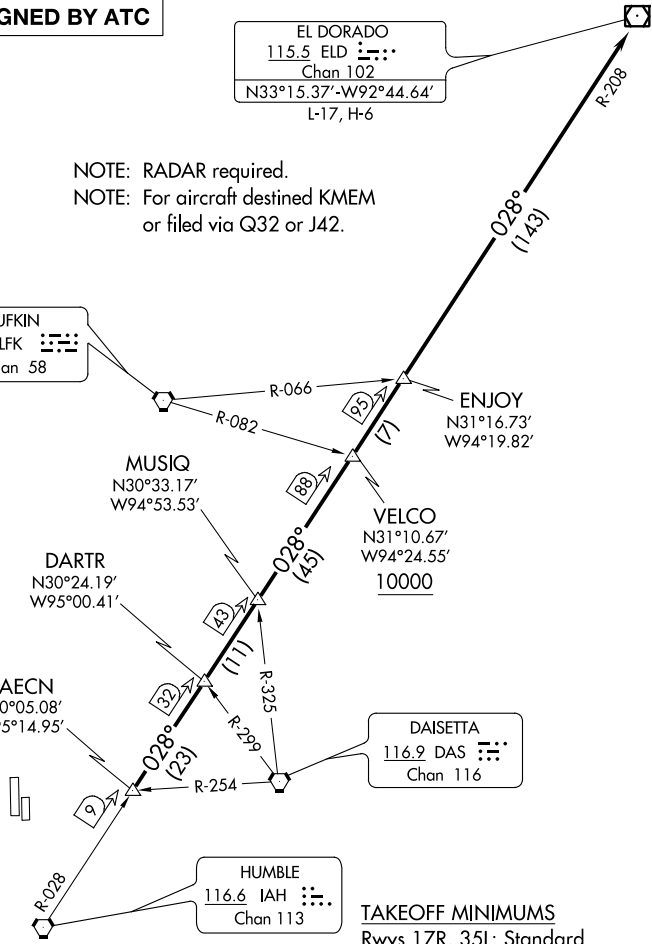
VELCO  
N31°10.67'  
W94°24.55'  
10000

DARTR  
N30°24.19'  
W95°00.41'

RAECN  
N30°05.08'  
W95°14.95'

DAISETTA  
116.9 DAS  
Chan 116

HUMBLE  
116.6 IAH  
Chan 113



**TAKEOFF MINIMUMS**  
Rwys 17R, 35L: Standard.  
Rwys 17L, 35R: NA - Environmental.  
Waterway 17, 35: NA - Air Traffic.

NOTE: Chart not to scale.

## DEPARTURE ROUTE DESCRIPTION

**TAKEOFF ALL RUNWAYS:** When entering controlled airspace, climb on assigned heading for RADAR vectors to RAECN INT. Maintain ATC assigned altitude. Expect filed altitude 10 minutes after departure, thence. . . .

. . . . on IAH R-028 and the ELD R-208 to ELD VOR/DME, cross VELCO INT at or above 10000.

SC-5, 22 FEB 2024 to 21 MAR 2024

SC-5, 22 FEB 2024 to 21 MAR 2024