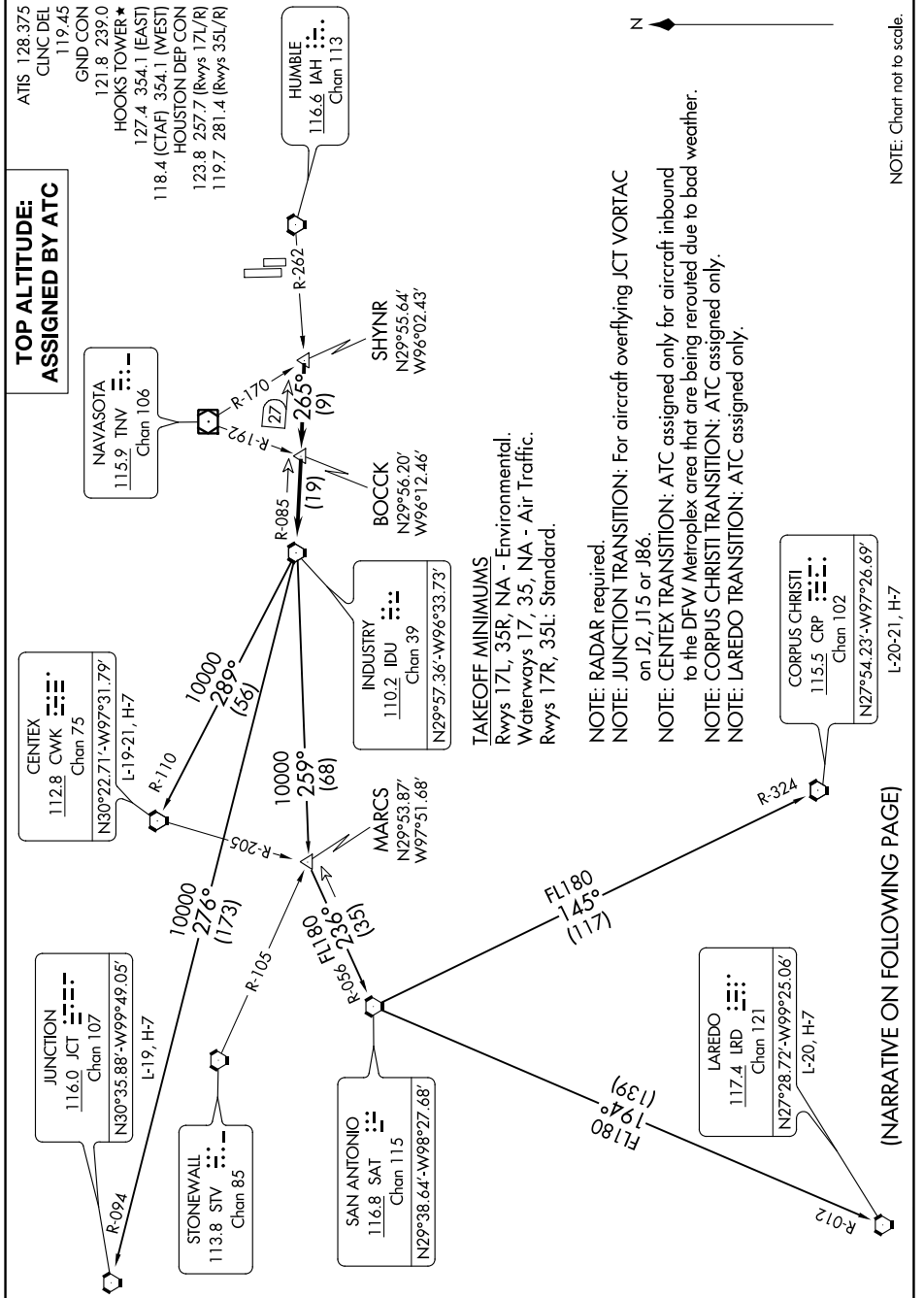


# INDUSTRY ONE DEPARTURE

SC-5, 22 FEB 2024 to 21 MAR 2024



**TOP ALTITUDE:  
ASSIGNED BY ATC**

ATIS 128.375  
CLNC DEL 119.45  
GND CON 121.8 239.0  
HOOKS TOWER\* 127.4 354.1 (EAST)  
118.4 (CTAF), 354.1 (WEST)  
HOUSTON DEP CON 123.8 257.7 (Rwys 17L/R)  
119.7 281.4 (Rwys 35L/R)

NAVASOTA  
115.9 TNV  
Chan 106

HUMBLE  
116.6 IAH  
Chan 113

SHYNR  
N29°55.64'  
W96°02.43'

BOCK  
N29°56.20'  
W96°12.46'

INDUSTRY  
110.2 IDU  
Chan 39  
N29°57.36'-W96°33.73'

MARCUS  
N29°53.87'  
W97°51.68'

**TAKEOFF MINIMUMS**  
Rwys 17L, 35R, NA - Environmental.  
Waterways 17, 35, NA - Air Traffic.  
Rwys 17R, 35L: Standard.

NOTE: RADAR required  
NOTE: JUNCTION TRANSITION: For aircraft overflying JCT VORTAC on J2, J15 or J86.

NOTE: CENTEX TRANSITION: ATC assigned only for aircraft inbound to the DFW Metroplex area that are being rerouted due to bad weather.  
NOTE: CORPUS CHRISTI TRANSITION: ATC assigned only.  
NOTE: LAREDO TRANSITION: ATC assigned only.

CORPUS CHRISTI  
115.5 CRP  
Chan 102  
N27°54.23'-W97°26.69'

LAREDO  
117.4 LRD  
Chan 121  
N27°28.72'-W99°25.06'

(NARRATIVE ON FOLLOWING PAGE)

NOTE: Chart not to scale.

# INDUSTRY ONE DEPARTURE

SC-5, 22 FEB 2024 to 21 MAR 2024