

LOC/DME I-HEW 110.5 Chan 42	APP CRS 168°	Rwy Idg TDZE Apt Elev	6002 152 152
---	------------------------	-----------------------------	---

LOC RWY 17R

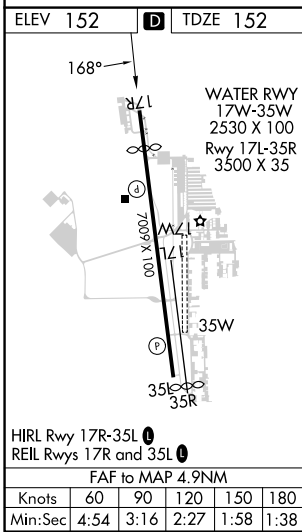
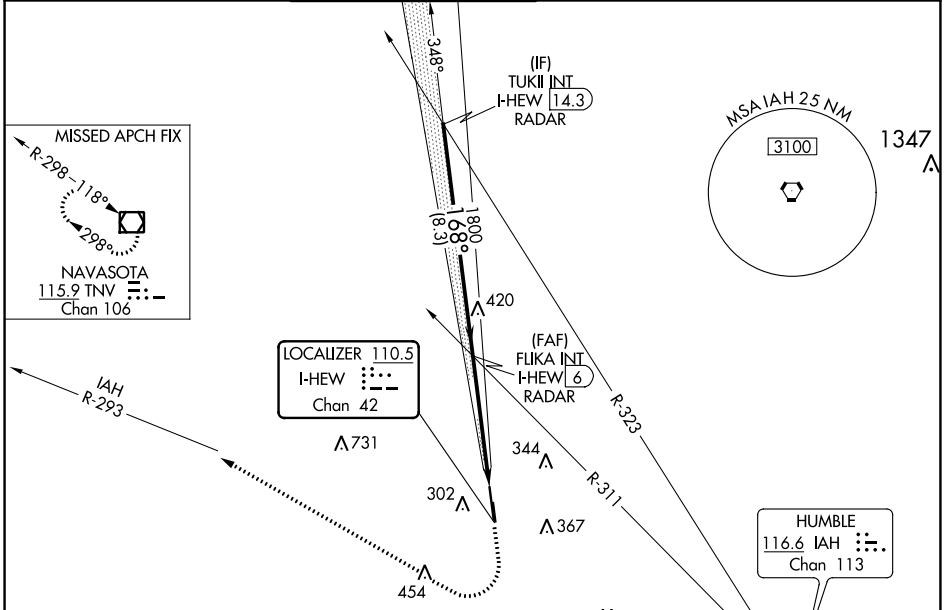
DAVID WAYNE HOOKS MEML (DWH)

RADAR required for procedure entry.

NA When local altimeter setting not received, use George Bush Intcnl/Houston altimeter setting and increase all MDA 40 feet; increase S-LOC 17R Cats C/D visibility 1/8 mile. Circling NA to Rwys 17W and 35W. Rwy 17R helicopter visibility reduction below 3/4 SM NA. Circling Rwy 35R NA at night.

MISSED APPROACH: Climb to 1200 then climbing right turn to 2000 on heading 325° and IAH VORTAC R-293 to TNV VOR/DME and hold.

ATIS 128.375	HOUSTON APP CON 119.7 281.4	HOOKS TOWER* 127.4 354.1 EAST 118.4 (CTAF) 354.1 WEST	GND CON 121.8 239.0	CLNC DEL 119.45	UNICOM 122.95
------------------------	---------------------------------------	---	-------------------------------	---------------------------	-------------------------



Visual Segment - Obstacles.		1200	2000	IAH R-293	TNV
TUKII INT I-HEW 14.3 RADAR		2000	168°	hdg 325°	IAH R-293
FLIKA INT I-HEW 6 RADAR		1800		I-HEW 1.1	
		8.3 NM	4.9 NM		
CATEGORY	A	B	C	D	
S-LOC 17R	640-1	488 (500-1)	640-1 3/8	488 (500-1 3/8)	
C CIRCLING	640-1 488 (500-1)	660-1 508 (600-1)	680-1 1/2 528 (600-1 1/2)	780-2 628 (700-2)	

SC-5, 22 FEB 2024 to 21 MAR 2024

SC-5, 22 FEB 2024 to 21 MAR 2024