

# PALACIOS THREE DEPARTURE

**TOP ALTITUDE:  
ASSIGNED BY ATC**

**RADAR and DME required.**

### TAKEOFF MINIMUMS

Rwys 17L, 35R: NA - Environmental.  
Waterways 17, 35: NA - Air Traffic.  
Rwys 17R, 35L: Standard.

ATIS 128.375  
CLNC DEL 119.45  
GND CON 121.8 239.0  
HOOKS TOWER\* 127.4 354.1 (EAST)  
118.4 (CTAF) 354.1 (WEST)  
HOUSTON DEP CON 119.7 281.4 (Rwys 35L/R)  
123.8 257.7 (Rwys 17L/R)

**FORT STOCKTON**  
116.9 FST  
Chan 116  
N30°57.13'  
W102°58.54'  
L-19, H-6

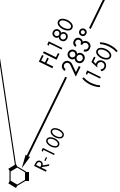
**SAN ANTONIO**  
116.8 SAT  
Chan 115  
N29°38.64'-W98°27.68'  
L-19, H-7

**ROCKSPRINGS**  
114.55 RSG  
Chan 92 (Y)  
N30°00.88'-W100°17.99'

**COTUILA**  
115.8 COT  
Chan 105  
N28°27.72'-W99°07.11'

**THREE RIVERS**  
111.4 THX  
Chan 51  
N28°30.30'-W98°09.03'

**PALACIOS**  
117.3 PSX  
Chan 120  
N28°45.87'-W96°18.37'



FL180  
283°  
(130)

R-136

FL180  
318°  
(112)

R-078

FL180  
259°  
(51)

FL180  
338°  
(70)

R-158

10000  
253°  
(99)

R-073

R-038 (37)  
219°

SKUBA  
N29°11.72'  
W95°47.47'

N

(NARRATIVE ON FOLLOWING PAGE)

NOTE: Chart not to scale.

# PALACIOS THREE DEPARTURE