

HOUSTON, TEXAS

AL-5457 (FAA)

23110

WAAS CH 45603 W35A	APP CRS 348°	Rwy ldg 6700 TDZE 152 Apt Elev 152
--	------------------------	---

RNAV (GPS) RWY 35L

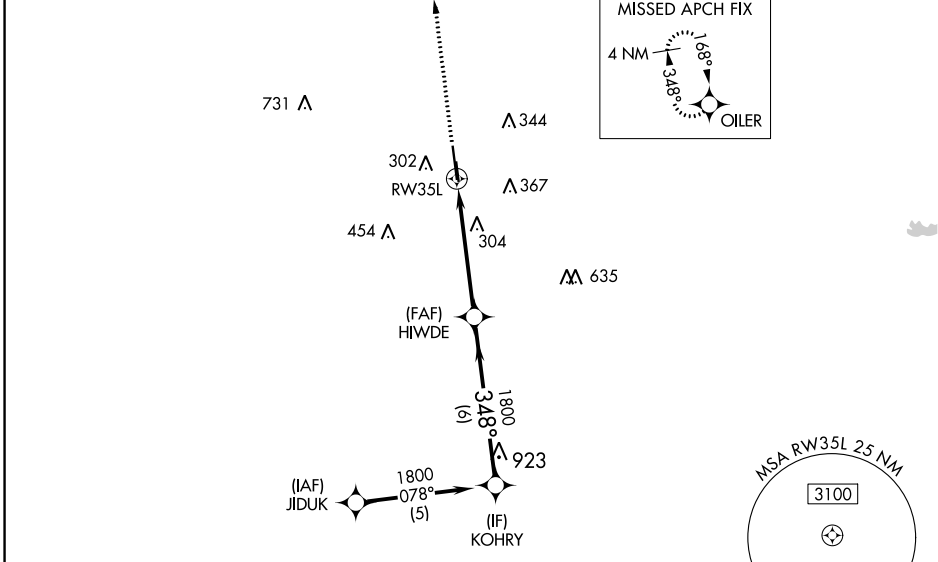
DAVID WAYNE HOOKS MEML (DWH)

RNP APCH-GPS.

▼ Baro-VNAV and VDP NA when using George Bush Intcntl/Houston altimeter setting.
 ▲ For uncompensated Baro-VNAV systems, LNAV/VNAV NA below -4°C or above 54°C.
 ▲ When local altimeter setting not received, use George Bush Intcntl/Houston altimeter setting and increase all DA 36 feet and all MDA 40 feet, increase LPV and LNAV/VNAV visibility all Cats ¼ mile, LNAV visibility Cats C/D ¼ mile. Rwy 35L helicopter visibility reduction below ¾ SM NA.
 Circling NA to Rwys 17W and 35W. Circling Rwy 35R NA at night.

MISSED APPROACH:
Climb to 2000 direct OILER and hold.

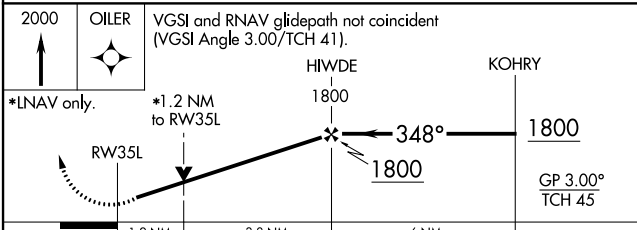
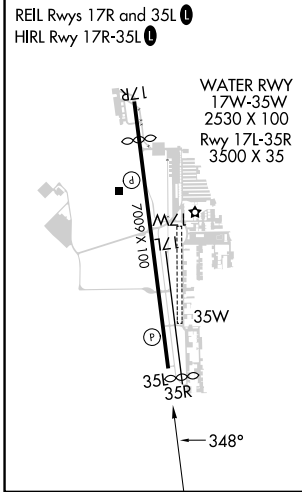
ATIS 128.375	HOUSTON APP CON 119.7 281.4	HOOKS TOWER* 127.4 354.1 (EAST) 118.4 (CTAF) 0 354.1 (WEST)	GND CON 121.8 239.0	CLNC DEL 119.45	UNICOM 122.95
------------------------	---------------------------------------	---	-------------------------------	---------------------------	-------------------------



SC-5, 22 FEB 2024 to 21 MAR 2024

SC-5, 22 FEB 2024 to 21 MAR 2024

ELEV 152	D	TDZE 152
-----------------	----------	-----------------



CATEGORY	A	B	C	D
LPV DA		451-1	299 (300-1)	
LNAV/ VNAV DA		552-1 3/8	400 (400-1 1/8)	
LNAV MDA	560-1	408 (500-1)	560-1 1/8	408 (500-1 1/8)
C CIRCLING	640-1 488 (500-1)	660-1 508 (600-1)	680-1 1/2 528 (600-1 1/2)	780-2 628 (700-2)

HOUSTON, TEXAS
Amdt 1F 20APR23

30°04'N-95°33'W

DAVID WAYNE HOOKS MEML (DWH)

RNAV (GPS) RWY 35L