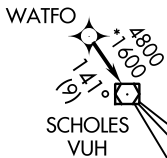
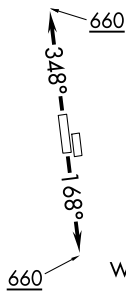


# WATFO SIX DEPARTURE (RNAV)

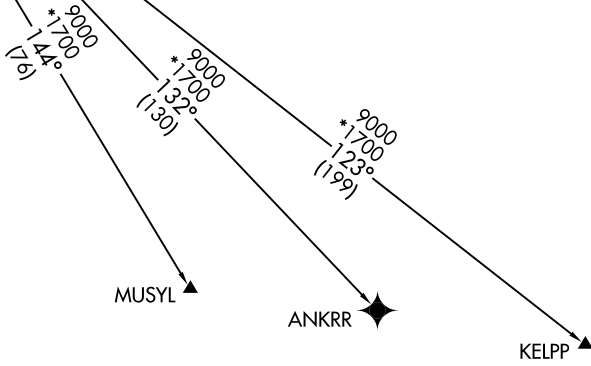
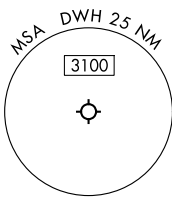
RNAV 1 - DME/DME/IRU or GPS.  
RADAR required.

**TOP ALTITUDE:  
ASSIGNED BY ATC**

ATIS 128.375  
CLNC DEL 119.45  
GND CON 121.8 239.0  
HOOKS TOWER \* 127.4 354.1 (EAST)  
118.4 (CTAF) 354.1 (WEST)  
HOUSTON DEP CON 119.7 281.4 (Rwys 35L/R)  
123.8 257.7 (Rwys 17L/R)



TAKEOFF MINIMUMS  
Rwys 17L, 35R: NA - Environmental.  
Waterways 17, 35: NA - Air traffic.  
Rwys 17R, 35L: Standard with minimum  
climb of 500'/NM to 660.



NOTE: Chart not to scale.

## DEPARTURE ROUTE DESCRIPTION

TAKEOFF RUNWAY 17R: Climb on heading 168° to 660, for RADAR vectors to WATFO, thence. . . .

TAKEOFF RUNWAY 35L: Climb on heading 348° to 660, for RADAR vectors to WATFO, thence. . . .

. . . on track 141° to VUH VOR/DME, then on (transition). Maintain ATC assigned altitude. Expect filed altitude 10 minutes after departure.

- ANKRR TRANSITION (WATFO6.ANKRR)
- KELPP TRANSITION (WATFO6.KELPP)
- MUSYL TRANSITION (WATFO6.MUSYL)

SC-5, 22 FEB 2024 to 21 MAR 2024

SC-5, 22 FEB 2024 to 21 MAR 2024