

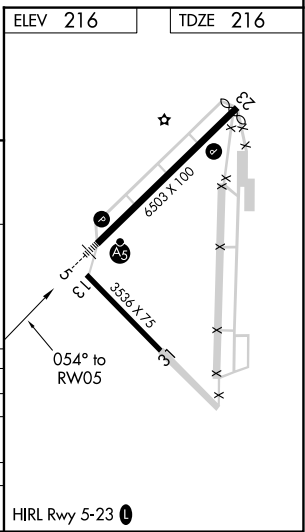
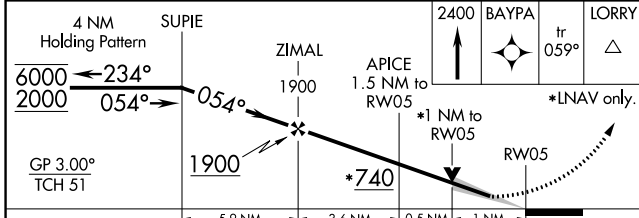
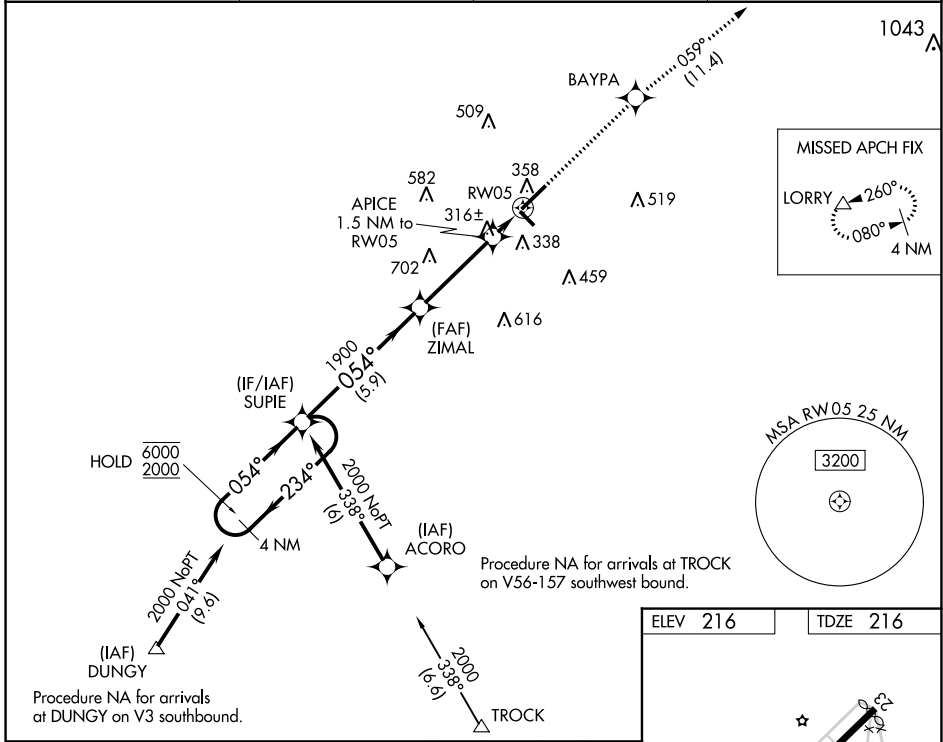
WAAS CH 90423 W05A	APP CRS 054°	Rwy Idg TDZE 216 Apt Elev 216	6503
--	------------------------	---	-------------

RNAV (GPS) RWY 5

LAURINBURG/MAXTON (MEB)

RNP APCH.	MALS R	MISSED APPROACH: Climb to 2400 direct BAYPA and on track 059° to LORRY and hold.
<p>▼ Circling to Rwy 13 and 31 NA at night. For uncompensated Baro-VNAV systems, LNAV/VNAV NA below -15°C or above 42°C. For inop ALS, increase LNAV/VNAV all cats visibility to ¼ SM, and LNAV Cat C/D visibility to 1 SM.</p>		

ASOS 134,125	FAYETTEVILLE APP CON 127.8 343,725	GCO 135,075	UNICOM 122.8 (CTAF) 0
------------------------	--	-----------------------	---------------------------------



CATEGORY	A		B	C	D
LPV DA	416-½		200 (200-½)		
LNAV/VNAV DA	472-½		256 (300-½)		
LNAV MDA	580-½	364 (400-½)	580-⅝	364 (400-⅝)	
CIRCLING	740-1	524 (600-1)	780-1½ 564 (600-1½)	1020-2½ 804 (900-2½)	

SE-2, 22 FEB 2024 to 21 MAR 2024

SE-2, 22 FEB 2024 to 21 MAR 2024