

|             |          |             |
|-------------|----------|-------------|
| APP CRS     | Rwy Idg  | <b>4011</b> |
| <b>045°</b> | TDZE     | <b>290</b>  |
|             | Apt Elev | <b>290</b>  |

# RNAV (GPS) RWY 4

KIRK FLD (PGR)

RNP APCH - GPS

**NA** Circling NA to Rwy 8 and 26. Rwy 4 helicopter visibility reduction below 3/4 SM NA. Use Jonesboro altimeter setting; when not received, use Walnut Ridge altimeter setting and increase all MDA 20 feet.

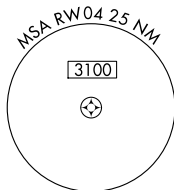
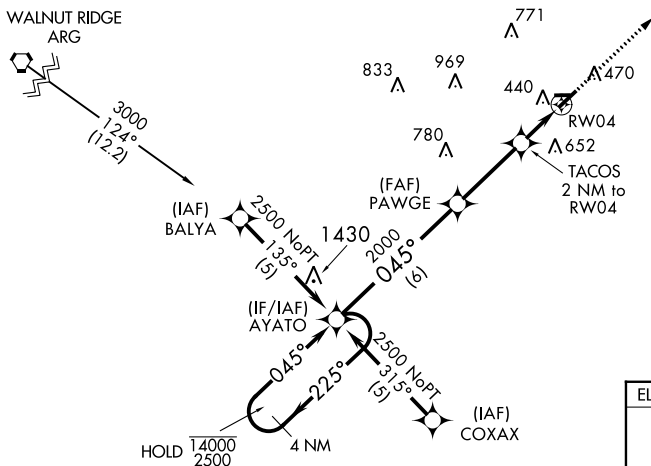
MISSED APPROACH: Climb to 3000 direct CUBIN and hold.

JBR ASOS  
**118.525**

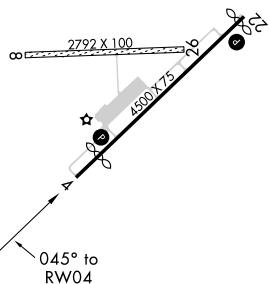
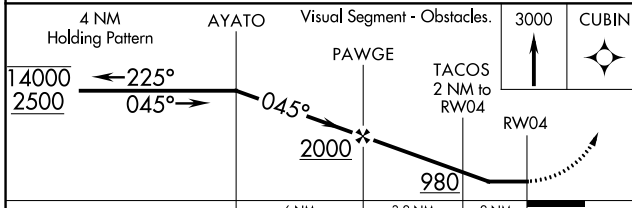
MEMPHIS CENTER  
**120.075 289.4**

UNICOM  
**122.8 (CTAF) 0**

Procedure NA for arrival on ARG VORTAC  
airway radials 058 CW 211.



|          |          |
|----------|----------|
| ELEV 290 | TDZE 290 |
|----------|----------|



| CATEGORY | A                      | B                       | C  | D |
|----------|------------------------|-------------------------|----|---|
| LNVA MDA | 800-1¼                 | 510 (600-1¼)            | NA |   |
| CIRCLING | 860-1¼<br>570 (600-1¼) | 1000-1¼<br>710 (800-1¼) | NA |   |

MIRL Rwy 4-22 0  
REIL Rwy 4 and 22 0

SC-1, 22 FEB 2024 to 21 MAR 2024

SC-1, 22 FEB 2024 to 21 MAR 2024