

VOR/DME JBR <b>115.85</b> Chan <b>105(Y)</b>	APP CRS <b>019°</b>	Rwy Idg TDZE Apt Elev <b>4011</b> <b>290</b> <b>290</b>
--	------------------------	--

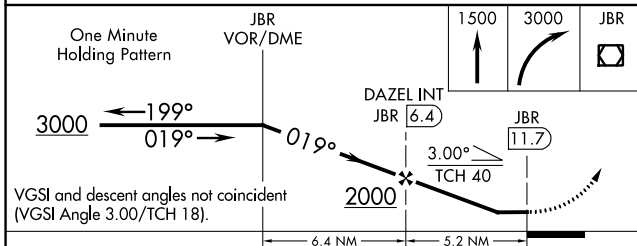
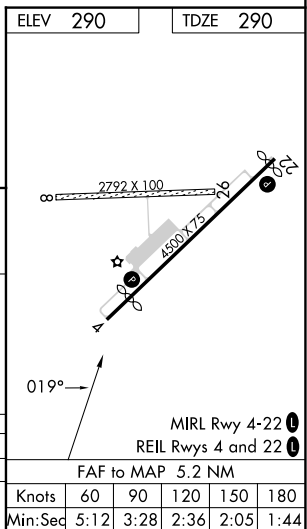
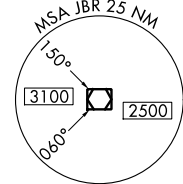
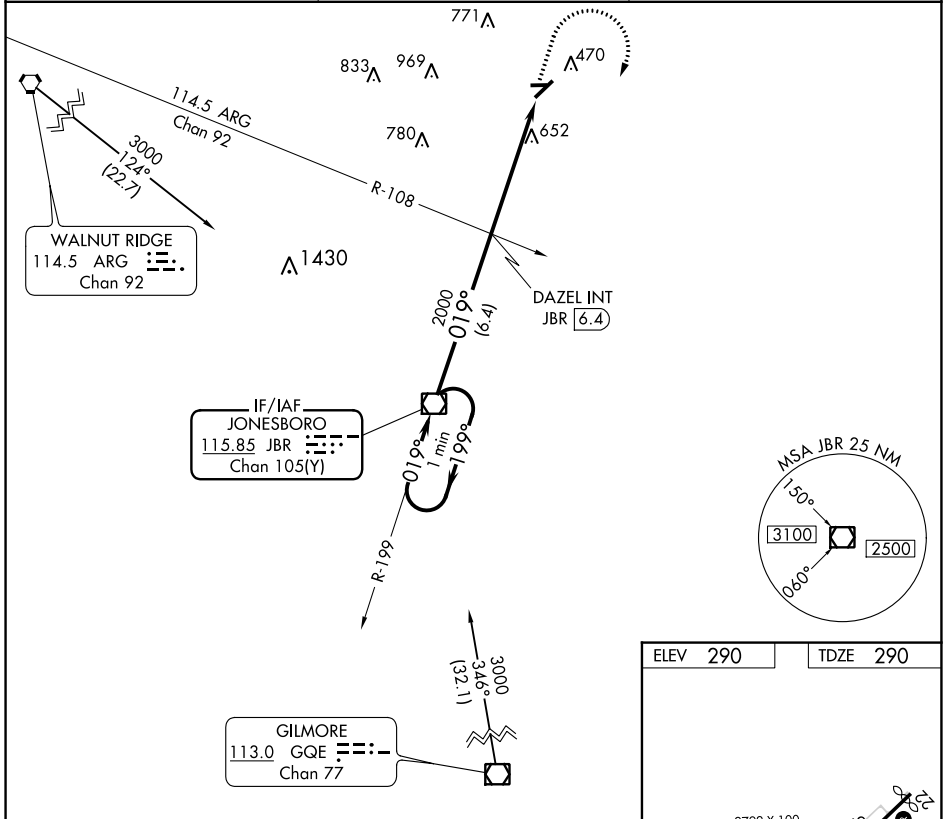
# VOR RWY 4

KIRK FLD (PGR)

**▼** Helicopter visibility reduction below 1 SM NA. Procedure NA at night.  
**▲ NA** Circling NA to Rwy's 8 and 26. Use Jonesboro altimeter setting; when not received, use Walnut Ridge altimeter setting and increase all MDAs 20 feet.

**MISSED APPROACH:** Climb to 1500 then climbing right turn to 3000 direct JBR VOR/DME and hold.

JBR ASOS <b>118.525</b>	MEMPHIS CENTER <b>120.075 289.4</b>	UNICOM <b>122.8 (CTAF) 0</b>
----------------------------	--	---------------------------------



CATEGORY	A	B	C	D
S-4	980-1	690 (700-1)	NA	NA
CIRCLING	980-1	1000-1	NA	NA
	690 (700-1)	710 (800-1)		

SC-1, 22 FEB 2024 to 21 MAR 2024

SC-1, 22 FEB 2024 to 21 MAR 2024