

MILLERSBURG, OHIO

AL-5561 (FAA)

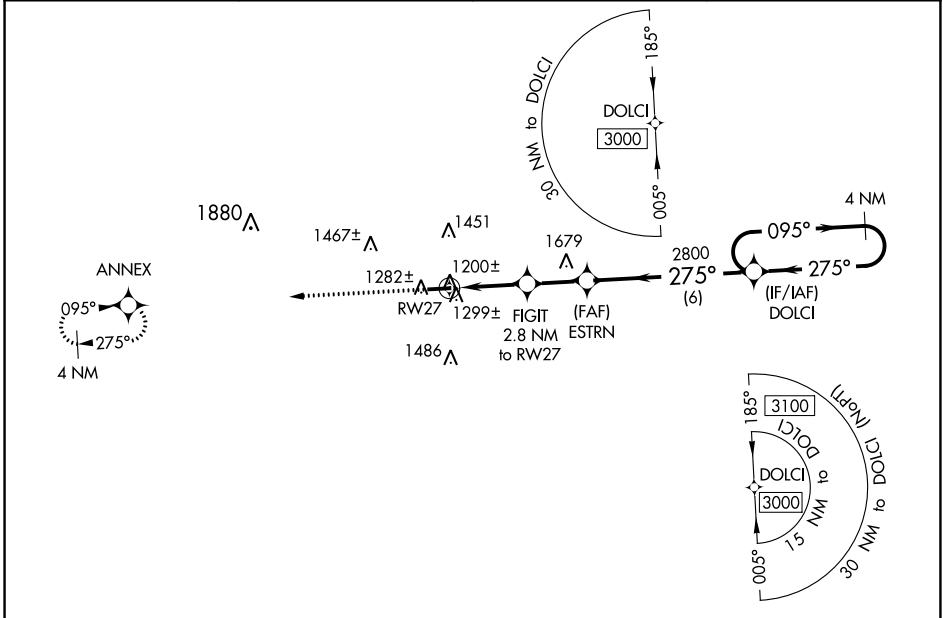
23166

WAAS CH <b>57937</b> <b>W27A</b>	APP CRS <b>275°</b>	Rwy Idg TDZE <b>1215</b> Apt Elev <b>1227</b>
--	------------------------	---

# RNAV (GPS) RWY 27

HOLMES COUNTY (10G)

RNP APCH - GPS.			MISSED APPROACH: Climb to 3000 direct ANNEX and hold.
AWOS-3 <b>128.325</b>	INDIANAPOLIS CENTER <b>124.45 323.275</b>	UNICOM <b>123.0 (CTAF)</b>	



EC-2, 22 FEB 2024 to 21 MAR 2024

EC-2, 22 FEB 2024 to 21 MAR 2024

ELEV 1227	TDZE 1215
-----------	-----------

3000	ANNEX	VGS1 and descent angles not coincident (VGS1 Angle 3.00/TCH 25).	4 NM Holding Pattern
↑	✦		
		RWY 27 0.9 NM to RWY 27 1.9 NM 2.2 NM 6 NM DOLCI	3000 2800 2100 095° → ← 275°
1251± 4400 X 75 1.0% UP 27°		FIGIT 2.8 NM to RWY 27 ESTRN TCH 40° 3.00°	

CATEGORY	A	B	C	D
LP MDA	1480-1		265 (300-1)	
LNAV MDA	1560-1		345 (400-1)	
<input checked="" type="checkbox"/> CIRCLING	1760-1	533 (600-1)	1840-1¾ 613 (700-1¾)	1860-2 633 (700-2)

MILLERSBURG, OHIO

Orig-C 29DEC22

40°32'N-81°57'W

HOLMES COUNTY (10G)

# RNAV (GPS) RWY 27