

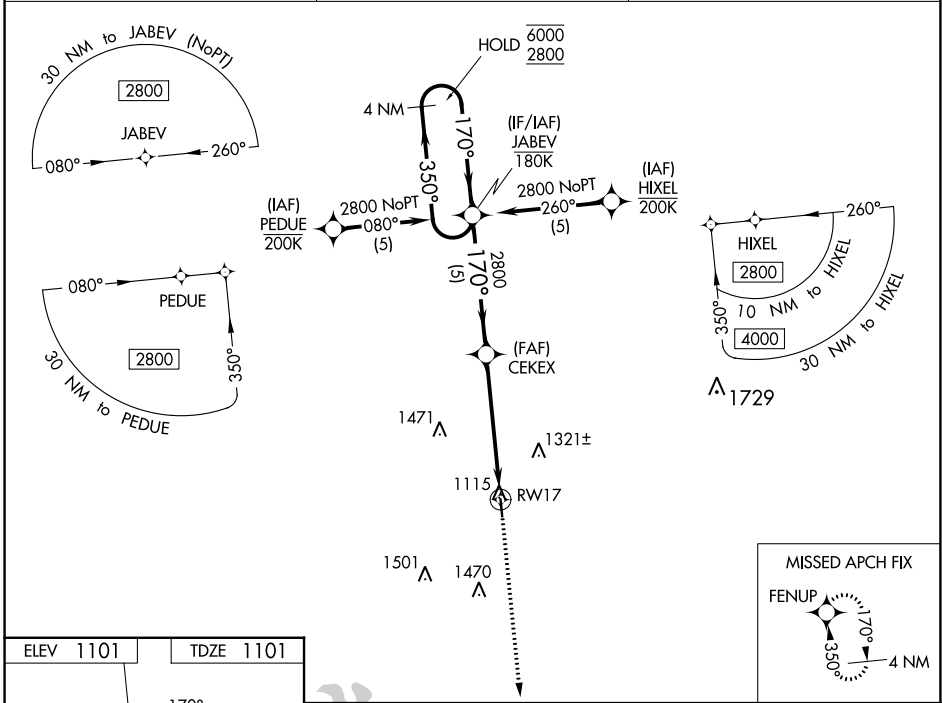
WAAS CH <b>99741</b> <b>W17A</b>	APP CRS <b>170°</b>	Rwy Idg TDZE Apt Elev	<b>3603</b> <b>1101</b> <b>1101</b>
--	------------------------	-----------------------------	---

# RNAV (GPS) RWY 17

BOWIE MUNI (ØF2)

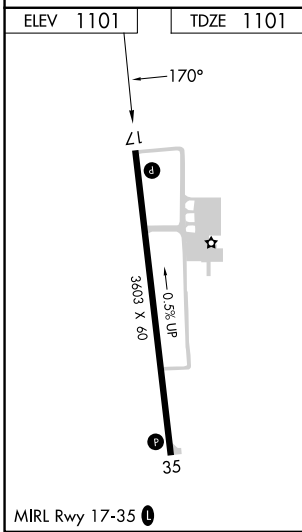
RNP APCH	MISSED APPROACH: Climb to 3000 direct FENUP and hold.
<b>▽</b> Rwy 17 helicopter visibility reduction below 1 SM NA. <b>▲</b> For uncompensated Baro-VNAV systems, LNAV/VNAV NA below -17° C or above 54° C.	

AWOS-3PT <b>118.75</b>	FORT WORTH CENTER <b>127.95 322.325</b>	UNICOM <b>122.8 (CTAF) 0</b>
---------------------------	--	---------------------------------



SC-2, 22 FEB 2024 to 21 MAR 2024

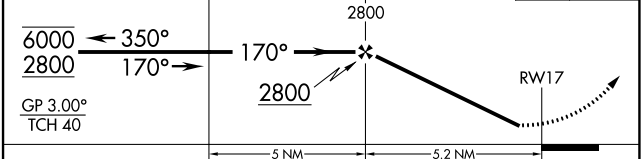
SC-2, 22 FEB 2024 to 21 MAR 2024



VGSI and RNAV glidepath not coincident (VGSI Angle 3.00/TCH 35).

4 NM Holding Pattern JABEV

3000 FENUP



CATEGORY	A	B	C	D
LPV DA	1351-1	250 (300-1)		NA
LNAV/VNAV DA	1546-1 <sup>3</sup> / <sub>8</sub>	445 (500-1 <sup>3</sup> / <sub>8</sub> )		NA
LNAV MDA	1640-1	539 (600-1)	1640-1 <sup>3</sup> / <sub>8</sub> 539 (600-1 <sup>3</sup> / <sub>8</sub> )	NA
<b>C</b> CIRCLING	1640-1 539 (600-1)	1680-1 579 (600-1)	1860-2 <sup>1</sup> / <sub>4</sub> 759 (800-2 <sup>1</sup> / <sub>4</sub> )	NA