

WAAS CH 45540 W34A	APP CRS 334°	Rwy Idg TDZE 20 Apt Elev 20	4477
--	------------------------	---	-------------

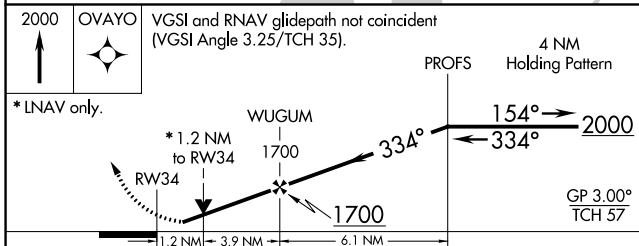
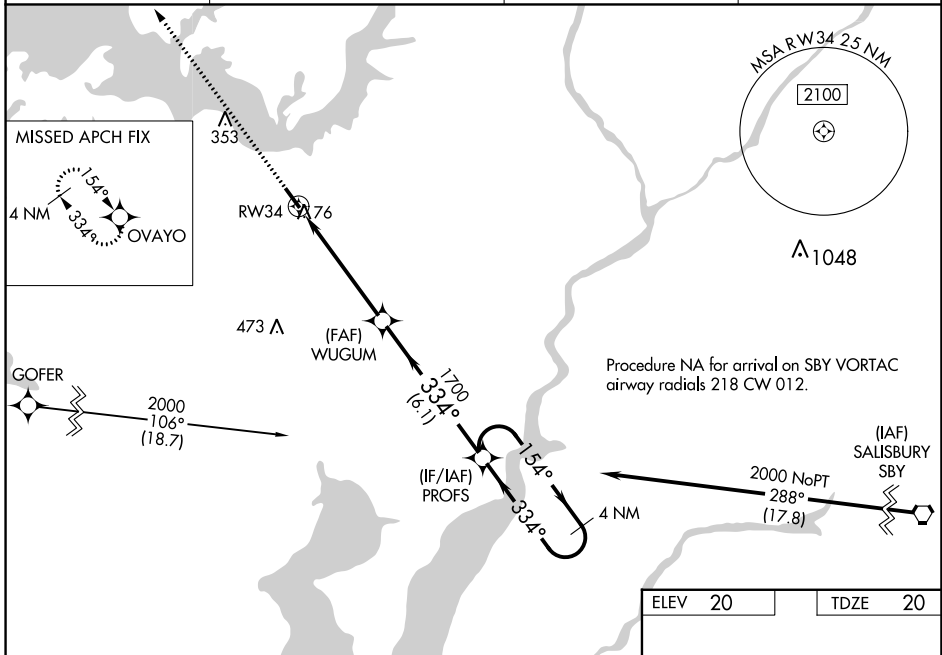
RNAV (GPS) RWY 34

CAMBRIDGE-DORCHESTER RGNL (CGE)

⚠ Circling NA at night. For uncompensated Baro-VNAV systems, LNAV/VNAV NA below -15°C (5°F) or above 54°C (130°F). Rwy 34 helicopter visibility reduction below ¾ SM NA. DME/DME RNP-0.3 NA.

MISSED APPROACH: Climb to 2000 direct OVAYO and hold.

AWOS-3 120.675	PATXENT APP CON ★ 121.0 250.3	UNICOM 122.7 (CTAF)	121.9 ⓪
--------------------------	---	-------------------------------	-----------------------



ELEV 20	TDZE 20
----------------	----------------

CATEGORY	A	B	C	D
LPV DA		286-7/8	266 (300-7/8)	
LNAV/VNAV DA		309-7/8	289 (300-7/8)	
LNAV MDA	480-1 460 (500-1)		480-1 3/8 460 (500-1 3/8)	
C CIRCLING	480-1 460 (500-1)		660-1 3/4 640 (700-1 3/4)	780-2 1/2 760 (800-2 1/2)

NE-3, 22 FEB 2024 to 21 MAR 2024

NE-3, 22 FEB 2024 to 21 MAR 2024