

BORRN SIX DEPARTURE (RNAV)

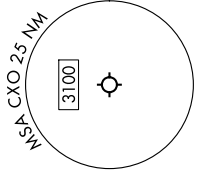
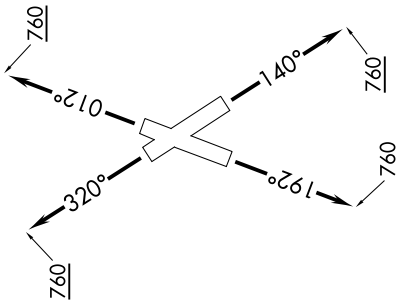
SC-5, 22 FEB 2024 to 21 MAR 2024

TOP ALTITUDE: ASSIGNED BY ATC

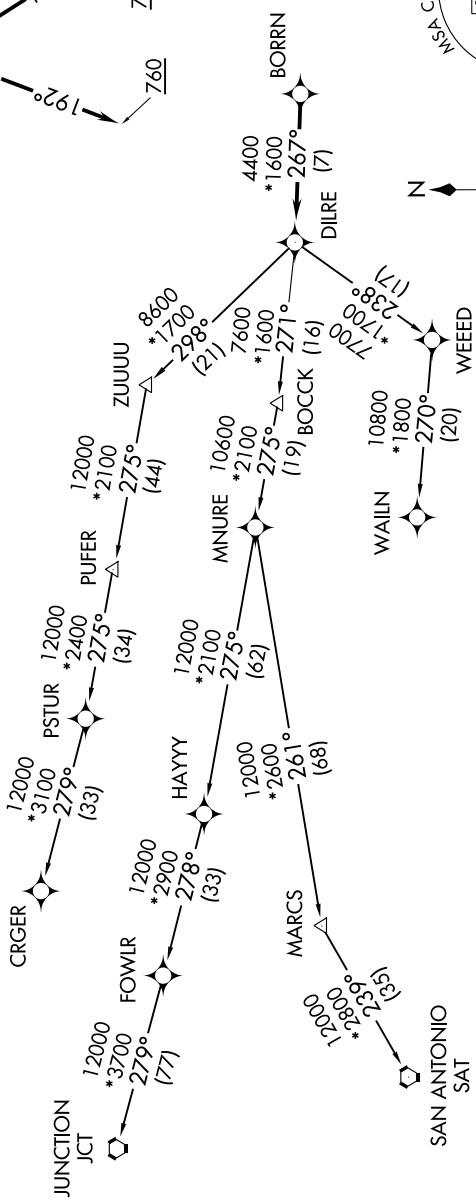
RNAV 1 - DME/DME/IRU or GPS.
RADAR required.

- ATIS 118.325
- CINC DEL 120.45
- CINC DEL (When hvv closed) 119.55
- GND CON 120.45
- CONROE TOWER* 124.125 (CTAF)
- HOUSTON DEP CON 119.7 281.4

TAKEOFF MINIMUMS
Rwys 1, 14, 19, 32: Standard with
minimum climb of 500'/NM to 760.



NOTE: Chart not to scale.



NOTE: CRGR-TRANSITION ATC assigned only
for aircraft departing 54T, AXH, EFD, GLS,
HPY, IWS, LBX, LVJ, SGR, TME, T00, T41.

(NARRATIVE ON FOLLOWING PAGE)

SC-5, 22 FEB 2024 to 21 MAR 2024