

(CRIED1.CRIED) 21336

# CRIED ONE DEPARTURE

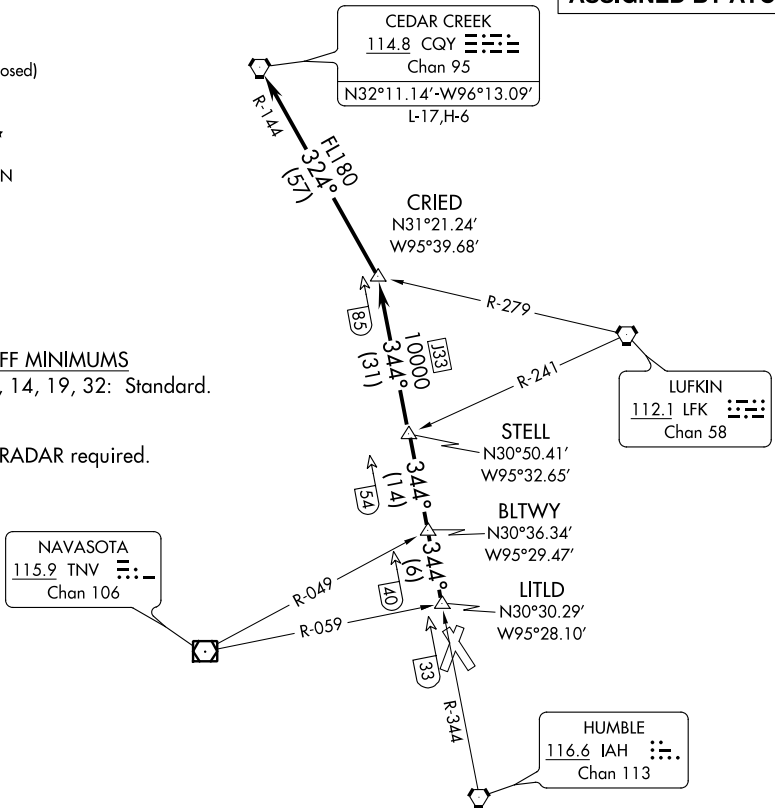
AL-5573 (FAA) CONROE/NORTH HOUSTON RGNL (C'XO)  
HOUSTON, TEXAS

ATIS  
118.325  
CLNC DEL  
120.45  
CLNC DEL  
119.55 (when twr closed)  
GND CON  
120.45  
CONROE TOWER ★  
124.125 (CTAF)  
HOUSTON DEP CON  
119.7 281.4

**TOP ALTITUDE:  
ASSIGNED BY ATC**

**TAKEOFF MINIMUMS**  
Rwys 1, 14, 19, 32: Standard.

NOTE: RADAR required.



SC-5, 22 FEB 2024 to 21 MAR 2024

SC-5, 22 FEB 2024 to 21 MAR 2024

NOTE: Chart not to scale.

## DEPARTURE ROUTE DESCRIPTION

**TAKEOFF ALL RUNWAYS:** When entering controlled airspace, climb on assigned heading for RADAR vectors to LITLD INT. Maintain ATC assigned altitude. Expect filed altitude 10 minutes after departure, thence . . . .

. . . . on IAH R-344 to STELL INT, then on IAH R-344 to CRIED INT, then left turn on CQY R-144 to CQY VORTAC.

**CRIED ONE DEPARTURE**  
(CRIED1.CRIED) 07OCT21

HOUSTON, TEXAS  
CONROE/NORTH HOUSTON RGNL (C'XO)