


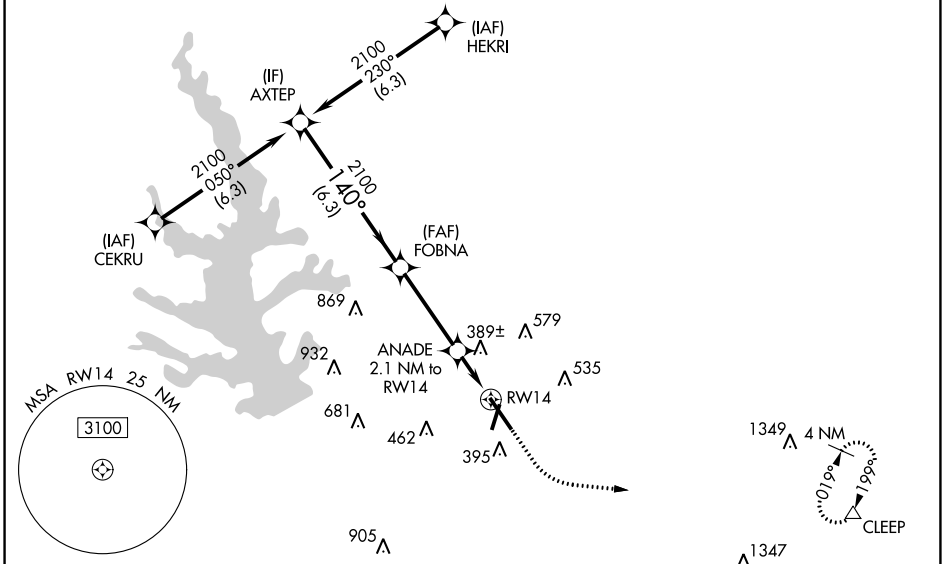
WAAS CH 99512 W14A	APP CRS 140°	Rwy Idg TDZE 236 Apt Elev 245
--	------------------------	---

RNAV (GPS) RWY 14

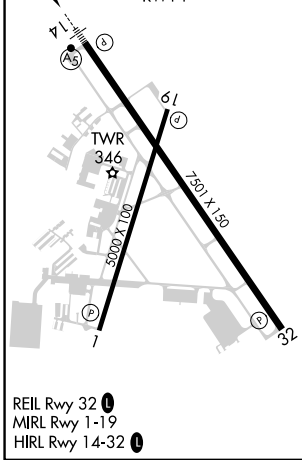
CONROE/NORTH HOUSTON RGNL (C'XO)

<p>▽ For uncompensated Baro-VNAV systems, LNAV/VNAV NA below -6°C (-22°F) or above 54°C (130°F). DME/DME RNP-0.3 NA.</p>	<p>MALSRL</p>  <p>MISSED APPROACH: Climb to 700 then climbing left turn to 3100 direct CLEEP and hold.</p>
---	---

ATIS 118.325	HOUSTON APP CON 119.7 281.4	CONROE TOWER ★ 124.125 (CTAF) 0	GND CON 120.45	CLNC DEL 120.45	CLNC DEL 119.55 (When twr closed)
------------------------	---------------------------------------	--	--------------------------	---------------------------	--



ELEV 245	D TDZE 236
-----------------	--------------------------



	AXTEP	FOBNA	ANADE	
	2100	2100	2.1 NM to RW14	
	140°	140°	*1.1 NM to RW14	
	2100		*940	
GP 3.00°	6.3 NM		3.6 NM	1 NM 1.1 NM
TCH 47				
CATEGORY	A	B	C	D
LPV DA		436-½	200 (200-½)	
LNAV/VNAV DA		521-½	285 (300-½)	
LNAV MDA	640-½	404 (400-½)	640-⅝	404 (400-⅝)
C CIRCLING	700-1	455 (500-1)	880-1¾ 635 (700-1¾)	960-2¼ 715 (800-2¼)

SC-5, 22 FEB 2024 to 21 MAR 2024

SC-5, 22 FEB 2024 to 21 MAR 2024