

WAAS CH 90219 W19A	APP CRS 192°	Rwy Idg TDZE Apt Elev	5000 237 245
--	------------------------	-----------------------------	---

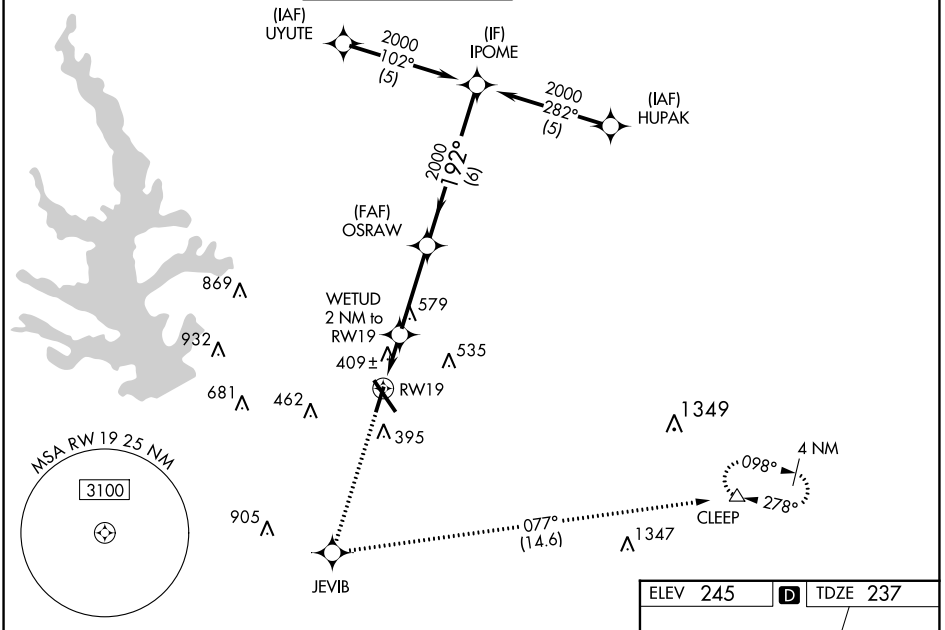
RNAV (GPS) RWY 19

CONROE/NORTH HOUSTON RGNL (C'XO)

▼ For uncompensated Baro-VNAV systems, LNAV/VNAV NA below -1.5°C (5°F) or above 48°C (118°F). DME/DME RNP-0.3 NA.
▲ Rwy 19 helicopter visibility reduction below ¾ SM NA.

MISSED APPROACH: Climb to 3100 direct JEVIB and left turn on track 077° to CLEEP and hold.

ATIS 118.325	HOUSTON APP CON 119.7 281.4	CONROE TOWER * 124.125 (CTAF)	GND CON 120.45	CLNC DEL 120.45	CLNC DEL 119.55 (When twr closed)
------------------------	---------------------------------------	---	--------------------------	---------------------------	--



SC-5, 22 FEB 2024 to 21 MAR 2024

SC-5, 22 FEB 2024 to 21 MAR 2024

3100	JEVIB	CLEEP		
*LNAV only.				
WETUD 2 NM to RW19		OSRAW 2000	IPOME 2000	GP 3.00° TCH 49
*1.2 NM to RW19		192°	2000	
900*		2000		
1.2 NM		0.8 NM	3.3 NM	6 NM
CATEGORY	A	B	C	D
LPV DA	527-1		290 (300-1)	
LNAV/VNAV DA	682-1½		445 (500-1½)	
LNAV MDA	660-1 423 (500-1)		660-1¼ 423 (500-1¼)	
CIRCLING	700-1 455 (500-1)		880-1¾ 635 (700-1¾) 960-2¼ 715 (800-2¼)	

