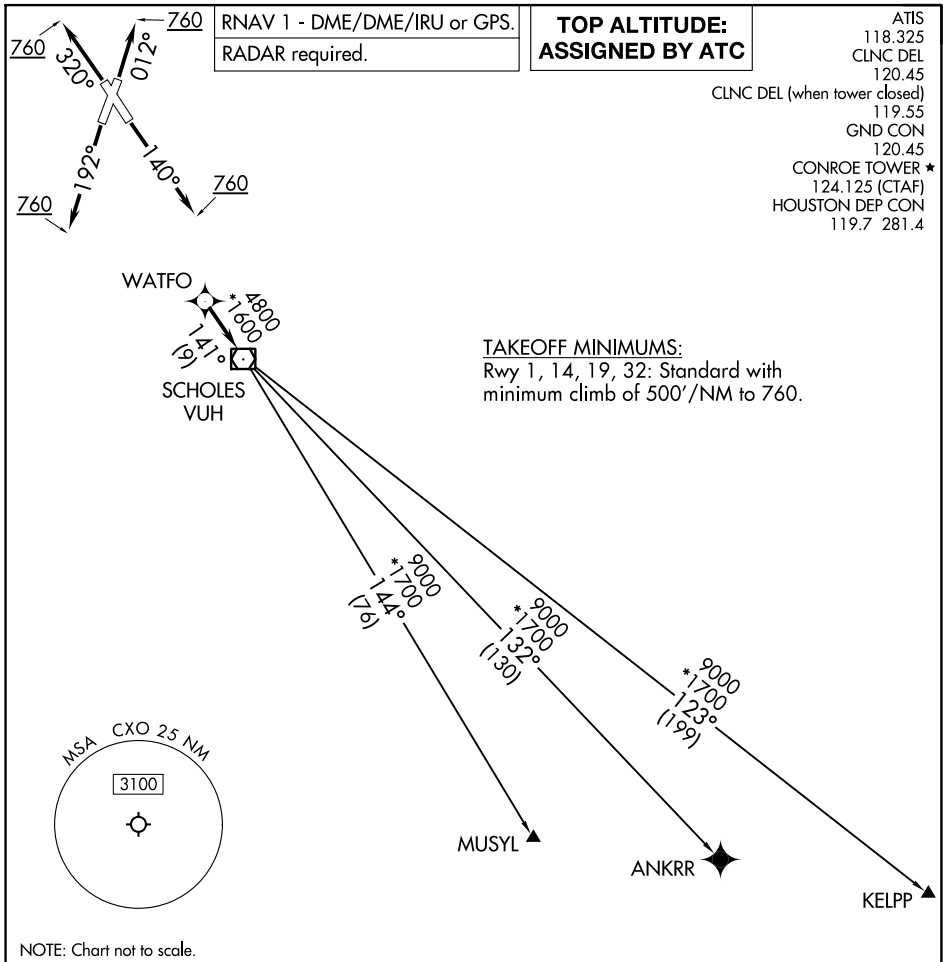


(WATFO6.WATFO) 23222

AL-5573 (FAA)

CONROE/NORTH HOUSTON RGNL (CXO)
HOUSTON, TEXAS

WATFO SIX DEPARTURE (RNAV)



RNAV 1 - DME/DME/IRU or GPS.
RADAR required.

**TOP ALTITUDE:
ASSIGNED BY ATC**

ATIS
118.325
CLNC DEL
120.45
CLNC DEL (when tower closed)
119.55
GND CON
120.45
CONROE TOWER ★
124.125 (CTAF)
HOUSTON DEP CON
119.7 281.4

TAKEOFF MINIMUMS:
Rwy 1, 14, 19, 32: Standard with
minimum climb of 500'/NM to 760.

SC-5, 22 FEB 2024 to 21 MAR 2024

SC-5, 22 FEB 2024 to 21 MAR 2024

NOTE: Chart not to scale.

DEPARTURE ROUTE DESCRIPTION

TAKEOFF RUNWAY 1: Climb on heading 012° to 760, for RADAR vectors to WATFO, thence. . . .
TAKEOFF RUNWAY 14: Climb on heading 140° to 760, for RADAR vectors to WATFO, thence. . . .
TAKEOFF RUNWAY 19: Climb on heading 192° to 760, for RADAR vectors to WATFO, thence. . . .
TAKEOFF RUNWAY 32: Climb on heading 320° to 760, for RADAR vectors to WATFO, thence. . . .
 . . . on track 141° to VUH VOR/DME, then on (transition). Maintain ATC assigned altitude.
 Expect filed altitude 10 minutes after departure.

ANKRR TRANSITION (WATFO6.ANKRR)
KELPP TRANSITION (WATFO6.KELPP)
MUSYL TRANSITION (WATFO6.MUSYL)

WATFO SIX DEPARTURE (RNAV)
(WATFO6.WATFO) 10AUG23

HOUSTON, TEXAS
CONROE/NORTH HOUSTON RGNL (CXO)