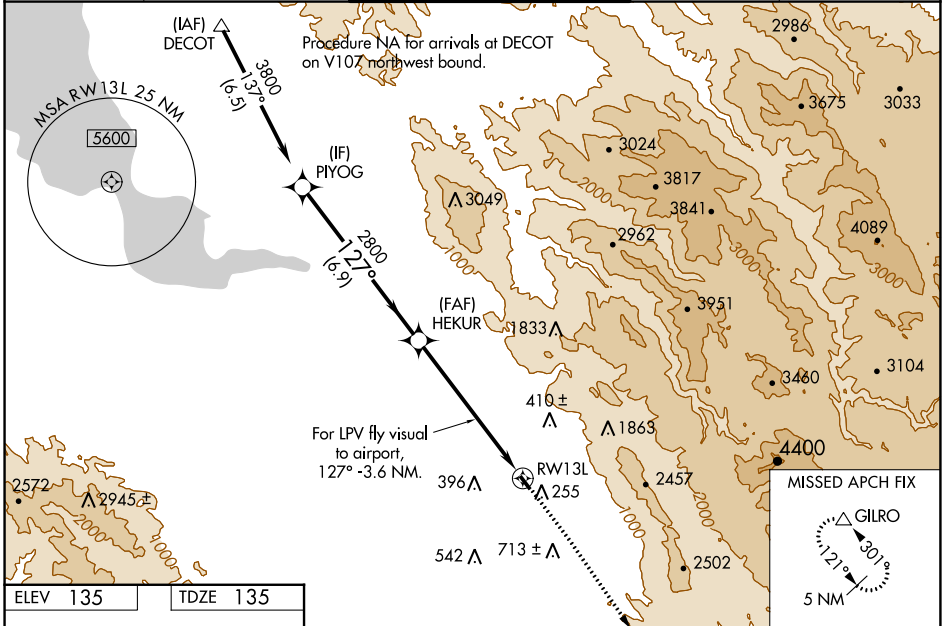


WAAS CH 82216 W13A	APP CRS 127°	Rwy Idg TDZE 135 Apt Elev 135	2601
--	------------------------	---	-------------

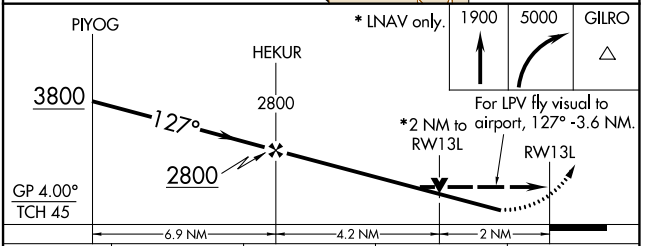
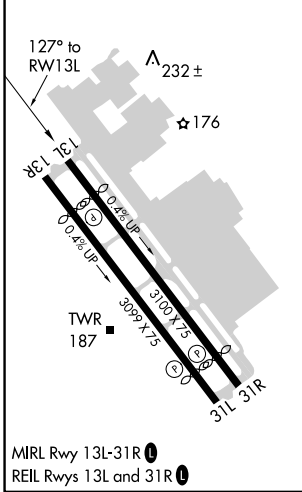
RNAV (GPS) RWY 13L

REID-HILLVIEW OF SANTA CLARA COUNTY (R/HV)

RNP APCH.		REID-HILLVIEW TOWER ★ (Rwy 13L-31R) (Rwy 13R-31L) 119.8 (CTAF) 0 126.1		GND CON 121.65	UNICOM 122.95
<p>⚠ NA Circling Rwy 31L NA at night. Rwy 13L helicopter visibility reduction below 3/4 SM NA. VDP NA with Norman Y Mineta San Jose Intl altimeter setting. When control tower closed, use Norman Y Mineta San Jose Intl altimeter setting and increase all DAs 25 feet and all MDAs 40 feet; increase LPV# visibility to 1 3/8 SM. Circling east of Rwy 13L-31R NA at night.</p>		<p>MISSED APPROACH: Climb to 1900 then climbing right turn to 5000 direct GILRO and hold. # Missed approach requires minimum climb of 300 feet per NM to 2800.</p>			
ATIS 125.2	NORCAL APP CON 120.1 290.25				



ELEV 135	TDZE 135
----------	----------



CATEGORY	A	B	C	D
LPV DA#	562-1 1/4	427 (500-1 1/4)		NA
LPV DA	1708-3	1573 (1600-3)		NA
LNAV MDA#	1040-1 1/4	905 (1000-1 1/4)		NA
LNAV MDA	1600-1 1/4 1465 (1500-1 1/4)	1600-1 1/2 1465 (1500-1 1/2)		NA
CIRCLING	1600-1 1/4 1465 (1500-1 1/4)	1600-1 1/2 1465 (1500-1 1/2)		NA

SW-2, 22 FEB 2024 to 21 MAR 2024

SW-2, 22 FEB 2024 to 21 MAR 2024