

LOC I-HWV <b>108.95</b>	APP CRS <b>059°</b>	Rwy ldg TDZE Apt Elev	<b>4201</b> <b>76</b> <b>81</b>
----------------------------	------------------------	-----------------------------	---------------------------------------

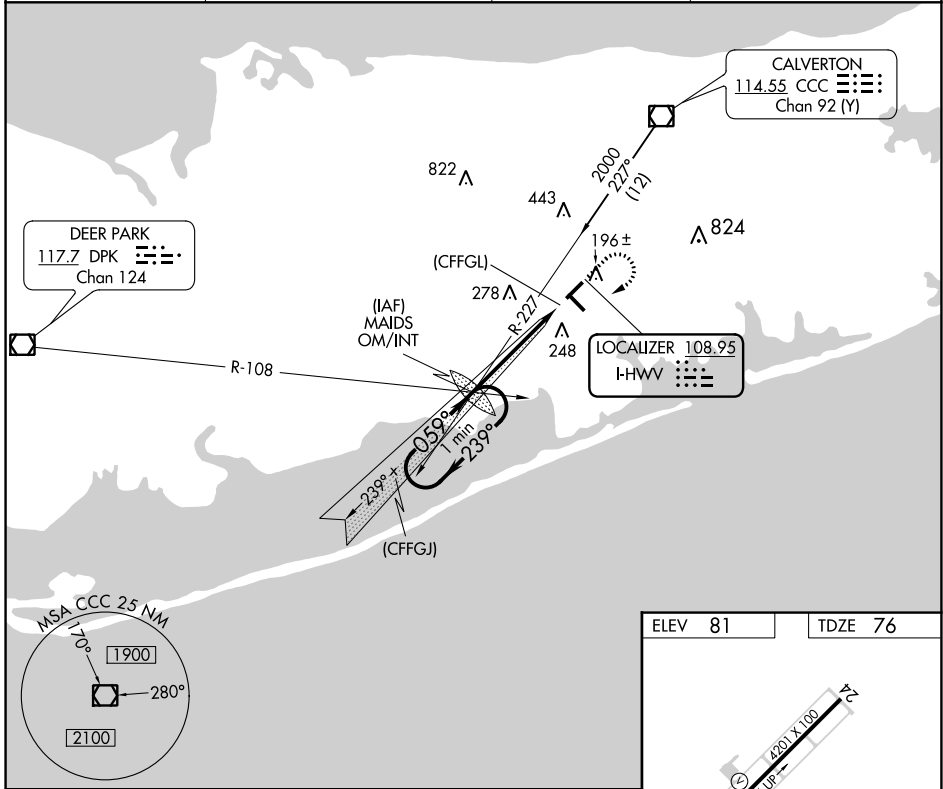
# ILS or LOC RWY 6

BROOKHAVEN (HWV)

**NA** Helicopter visibility reduction below 3/4 SM NA. When local altimeter setting not received, use Long Island Mac Arthur altimeter setting and increase all DA 28 feet and all MDA 40 feet. For inoperative MALSR, increase S-ILS 6 all Cats visibility to 3/8, and S-LOC 6 all Cats visibility to 1 mile. ILS localizer unusable 0.4 NM to threshold.

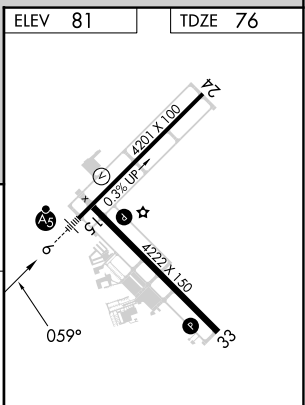
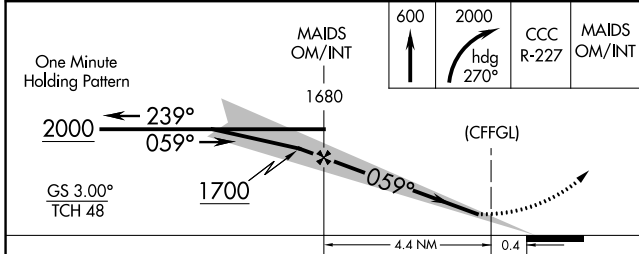
**MALSR** MISSED APPROACH: Climb to 600 then climbing right turn to 2000 on heading 270° and CCC VOR/DME R-227 to MAIDS OM/INT and hold, continue climb-in-hold to 2000.

ASOS <b>119.625</b>	NEW YORK APP CON <b>120.05 343.75</b>	CLNC DEL <b>133.2</b>	UNICOM <b>122.8 (CTAF)</b> <b>0</b>
------------------------	--	--------------------------	--



NE-2, 22 FEB 2024 to 21 MAR 2024

NE-2, 22 FEB 2024 to 21 MAR 2024



CATEGORY	A	B	C	D
S-ILS 6	337-3/4	261 (300-3/4)		NA
S-LOC 6	520-3/4	444 (500-3/4)		NA
<b>CIRCLING</b>	560-1	479 (500-1)		NA

REIL Rwy 15, 24 and 33 **0**  
MIRL Rwy 6-24 and 15-33 **0**

FAF to MAP 4.4 NM

Knots	60	90	120	150	180
Min:Sec	4:24	2:56	2:12	1:46	1:28