


WAAS CH 57925 W06A	APP CRS 059°	Rwy Idg 4201 TDZE 76 Apt Elev 81
--	------------------------	---

RNAV (GPS) RWY 6

BROOKHAVEN (HWV)

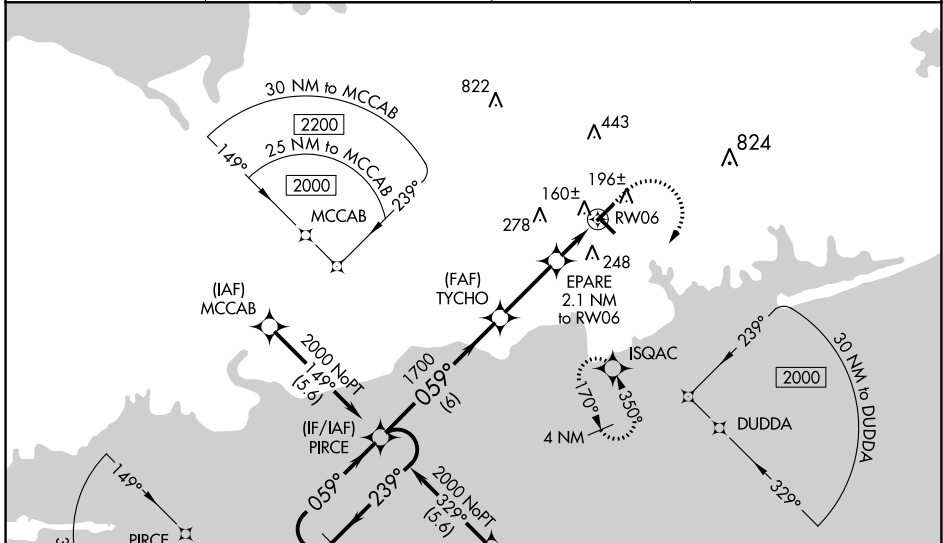
⚠ DME/DME RNP-0.3 NA. Helicopter visibility reduction below 3/4 SM NA. When local altimeter setting not received, use Islip altimeter setting and increase all DA 28 feet and all MDA 40 feet. Inoperative table does not apply to LNAV/VNAV. For inoperative MALSR, increase LPV all Cats visibility to 7/8 mile, increase LNAV all Cats visibility to 1 mile. For inoperative MALSR when using Islip altimeter setting, increase LPV and LNAV/VNAV all Cats visibility to 7/8 mile, increase LNAV all Cats visibility to 1 mile. Baro-VNAV and VDP NA with Islip altimeter setting. For uncompensated Baro-VNAV systems, LNAV/VNAV NA below -15°C (5°F) or above 54°C (130°F).

MALSR



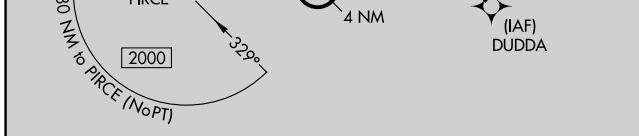
MISSED APPROACH:
Climb to 600 then climbing right turn to 2000 direct ISQAC and hold.

ASOS 119.625	NEW YORK APP CON 120.05 343.75	CLNC DEL 133.2	UNICOM 122.8 (CTAF) 0
------------------------	--	--------------------------	---------------------------------

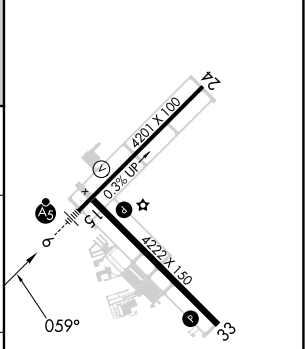
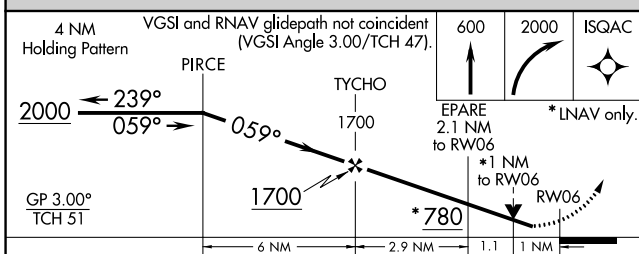


NE-2, 22 FEB 2024 to 21 MAR 2024

NE-2, 22 FEB 2024 to 21 MAR 2024



ELEV 81	TDZE 76
---------	---------



CATEGORY	A	B	C	D
LPV DA	339-3/4	263 (300-3/4)		NA
LNAV/VNAV DA	326-3/4	250 (300-3/4)		NA
LNAV MDA	420-3/4	344 (400-3/4)		NA
C CIRCLING	560-1	479 (500-1)		NA

REIL Rwy 15, 24 and 33 **0**
MIRL Rwy 6-24 and 15-33 **0**