

BLUFFTON, OHIO

AL-5665 (FAA)

22307

VORTAC FBC	APP CRS	Rwy Idg	4126
108.2	233°	TDZE	850
Chan 19		Apt Elev	851

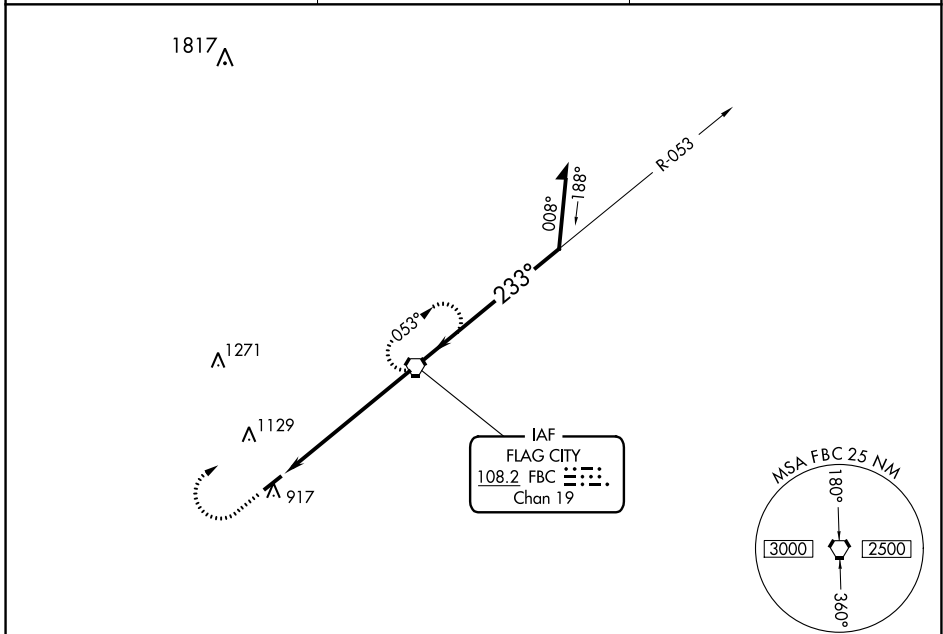
VOR RWY 23

BLUFFTON (5G7)

▽ Use Findlay altimeter setting; when not received, use Lima altimeter setting and increase all MDA 20 feet, increase S-23 Cat C $\frac{1}{8}$ SM and Circling Cat C/D visibility $\frac{1}{4}$ SM.

⚠ NA MISSED APPROACH: Climb to 2500 then right turn direct FBC VORTAC and hold.

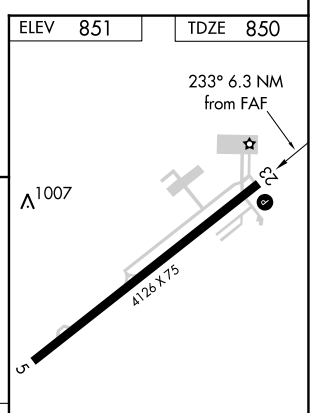
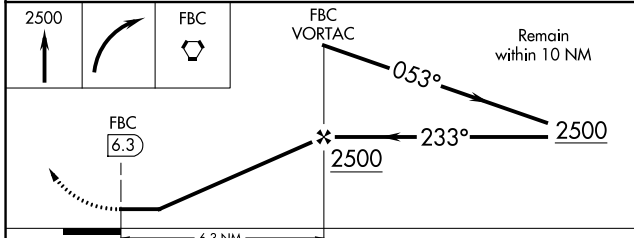
FDY ASOS	TOLEDO APP CON	UNICOM
132.85	120.8 317.55	122.8 (CTAF) 0



EC-2, 22 FEB 2024 to 21 MAR 2024

EC-2, 22 FEB 2024 to 21 MAR 2024

ELEV	851	TDZE	850
------	-----	------	-----



CATEGORY	A	B	C	D
S-23	1360-1 510 (600-1)	1520-1 669 (700-1)	1360-1 $\frac{1}{8}$ 510 (600-1 $\frac{1}{8}$)	1360-1 $\frac{1}{2}$ 510 (600-1 $\frac{1}{2}$)
C CIRCLING	1360-1 509 (600-1)	1520-1 669 (700-1)	1520-1 $\frac{3}{4}$ 669 (700-1 $\frac{3}{4}$)	1520-2 669 (700-2)

REIL Rwy 5 and 23 **0**
MIRL Rwy 5-23 **0**

FAF to MAP 6.3 NM

Knots	60	90	120	150	180
Min:Sec	6:18	4:12	3:09	2:31	2:06

BLUFFTON, OHIO
Amdt 7B 26MAR20

40°53'N-83°52'W

BLUFFTON (5G7) VOR RWY 23