

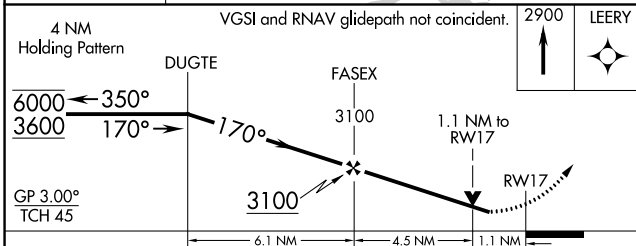
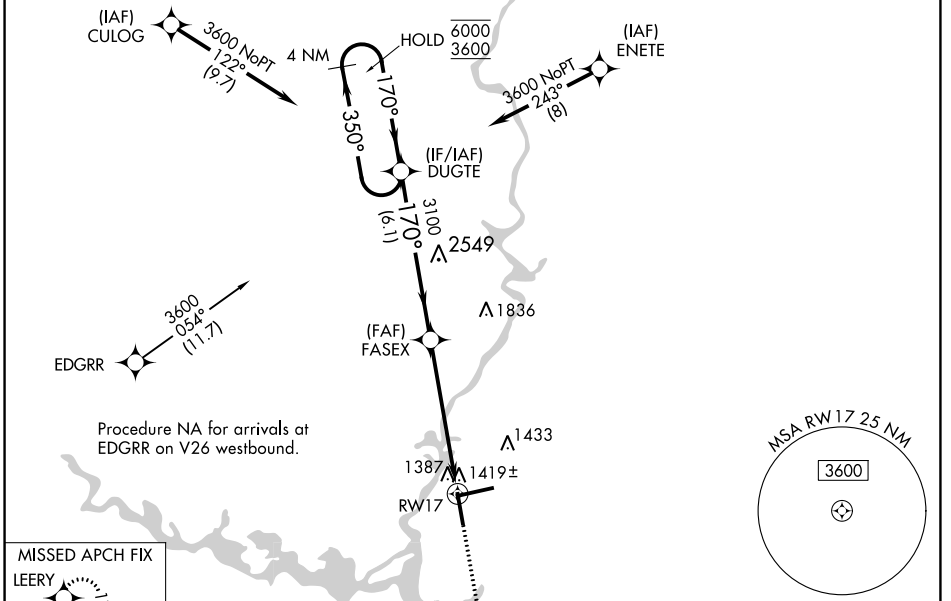
WAAS CH 53321 W17A	APP CRS 170°	Rwy Idg TDZE Apt Elev	6501 1277 1277
----------------------------------------	------------------------	-----------------------------	-------------------------------------------

RNAV (GPS) RWY 17

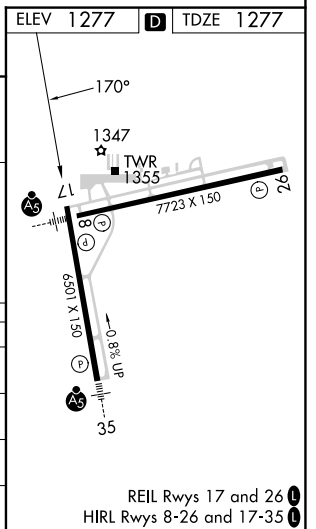
CENTRAL WISCONSIN (CWA)

RNP APCH - GPS.		MISSED APPROACH: Climb to 2900 direct LEERY and hold.
⚠ Rwy 17 helicopter visibility reduction below 3/4 SM NA. ⚠ For uncompensated Baro-VNAV systems, LNAV/VNAV NA below -17°C or above 54°C.		

ATIS 127.45	MINNEAPOLIS CENTER 124.4 317.7	CWA TOWER★ 119.75 (CTAF) 0 360.7	GND CON 121.9 360.7	UNICOM 122.95
-----------------------	------------------------------------------	--------------------------------------------	-------------------------------	-------------------------



CATEGORY	A	B	C	D
LPV DA		1534-1	257 (300-1)	
LNAV/VNAV DA		1601-1 1/8	324 (400-1 1/8)	
LNAV MDA	1680-1	403 (500-1)	1680-1 1/8	403 (500-1 1/8)
CIRCLING	1740-1	463 (500-1)	1740-1 1/2	1840-2
			463 (500-1 1/2)	563 (600-2)



EC-3, 22 FEB 2024 to 21 MAR 2024

EC-3, 22 FEB 2024 to 21 MAR 2024