

WAAS CH <b>82700</b> <b>W36A</b>	APP CRS <b>356°</b>	Rwy Idg TDZE Apt Elev	<b>4097</b> <b>1086</b> <b>1096</b>
--	------------------------	-----------------------------	---

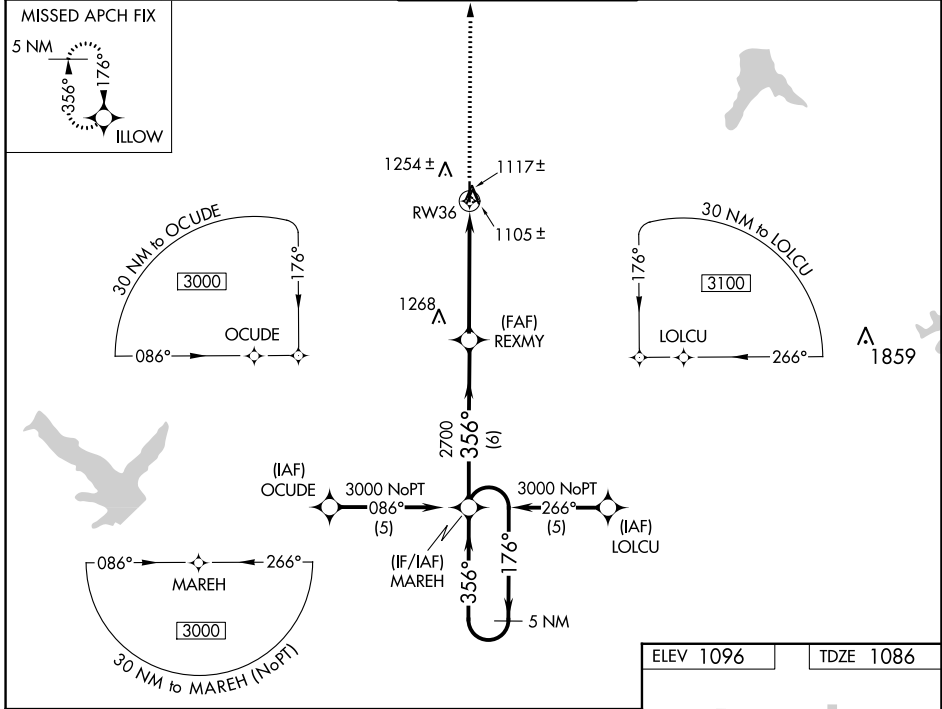
# RNAV (GPS) RWY 36

JOHNSON COUNTY EXEC (OJC)

**▽** For uncompensated Baro-VNAV systems, LNAV/VNAV NA below -17°C (2°F) or above 95°C (203°F). DME/DME RNP-0.3 NA. Visibility reduction by helicopters NA. For inop MALS, increase LPV, LNAV/VNAV and LNAV all Cats visibility to 1 mile.

**MALS** **MISSED APPROACH:** Climb to 3100 direct ILLOW and hold.

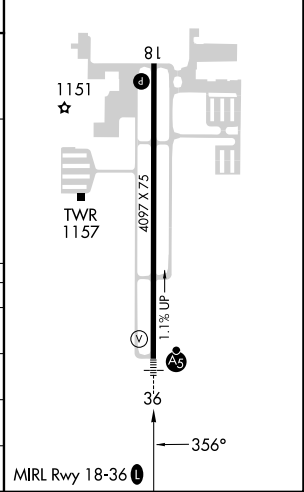
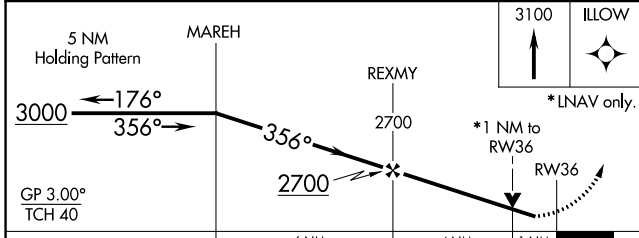
ATIS <b>119.35</b>	KANSAS CITY APP CON <b>118.9 251.075</b>	EXECUTIVE TOWER* <b>126.0 (CTAF) 225.4</b>	GND CON <b>121.6</b>	UNICOM <b>122.95</b>
-----------------------	---	---	-------------------------	-------------------------



NC-2, 22 FEB 2024 to 21 MAR 2024

NC-2, 22 FEB 2024 to 21 MAR 2024

ELEV 1096	TDZE 1086
-----------	-----------



CATEGORY	A	B	C	D
LPV DA	1336-3/4	250 (300-3/4)		NA
LNAV/VNAV DA	1355-3/4	269 (300-3/4)		NA
LNAV MDA	1400-3/4	314 (400-3/4)		NA
<b>CIRCLING</b>	1620-1	524 (600-1)	1620-1 1/2 524 (600-1 1/2)	NA