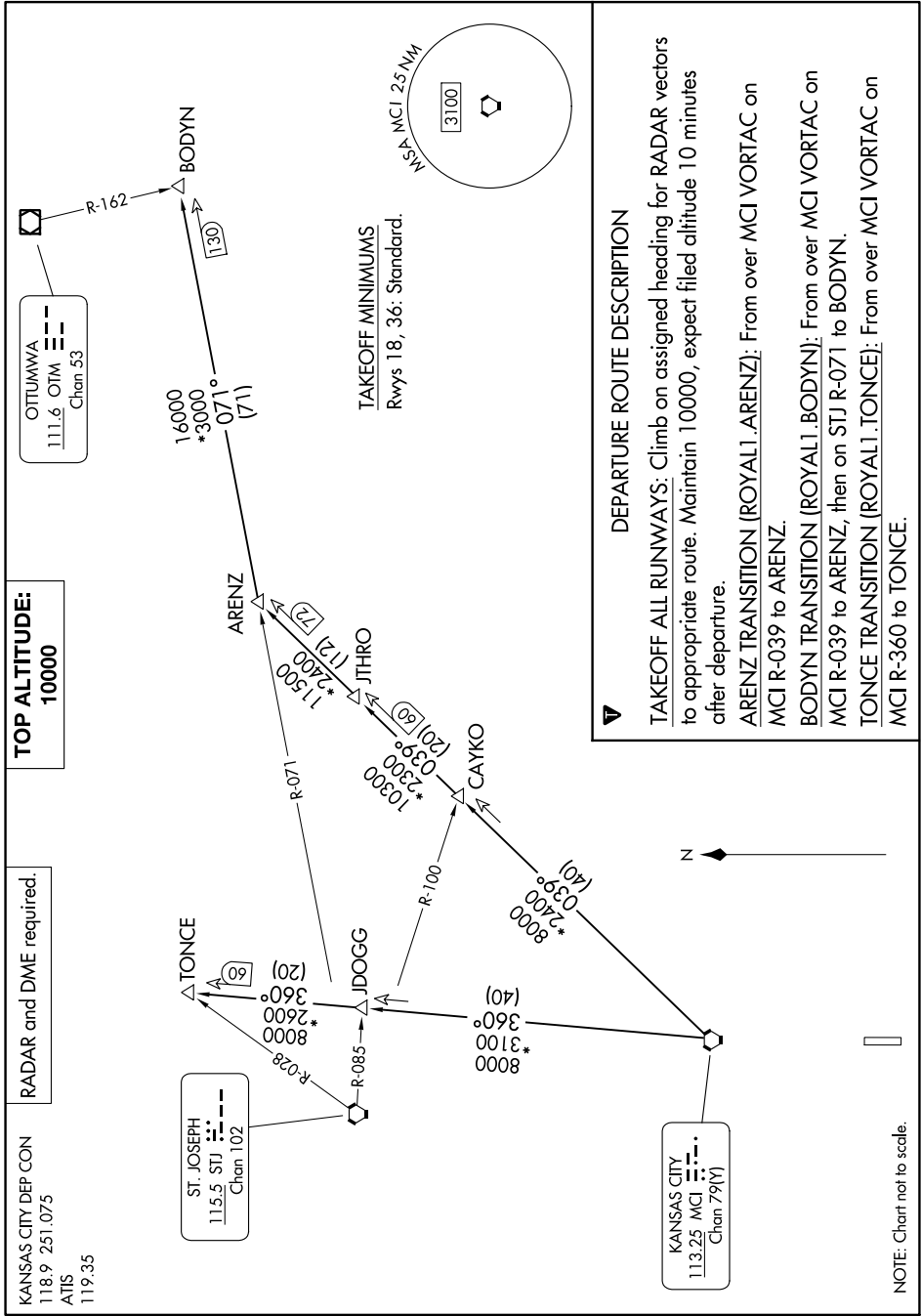


# ROYAL ONE DEPARTURE

NC-2, 22 FEB 2024 to 21 MAR 2024



KANSAS CITY DEP CON  
118.9 251.075  
ATIS  
119.35

RADAR and DME required.

TOP ALTITUDE:  
10000

OTTUMWA  
111.6 OTM  
Chan 53

ST. JOSEPH  
115.5 STJ  
Chan 102

KANSAS CITY  
113.25 MCI  
Chan 79(1)

**DEPARTURE ROUTE DESCRIPTION**

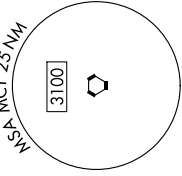
**TAKEOFF ALL RUNWAYS:** Climb on assigned heading for RADAR vectors to appropriate route. Maintain 10000, expect filed altitude 10 minutes after departure.

**ARENZ TRANSITION (ROYAL1.ARENZ):** From over MCI VORTAC on MCI R-039 to ARENZ.

**BODYN TRANSITION (ROYAL1.BODYN):** From over MCI VORTAC on MCI R-039 to ARENZ, then on STJ R-071 to BODYN.

**TONCE TRANSITION (ROYAL1.TONCE):** From over MCI VORTAC on MCI R-360 to TONCE.

TAKEOFF MINIMUMS  
Rwys 18, 36: Standard.



NOTE: Chart not to scale.

NC-2, 22 FEB 2024 to 21 MAR 2024