

KERRVILLE, TEXAS

AL-5690 (FAA)

23054

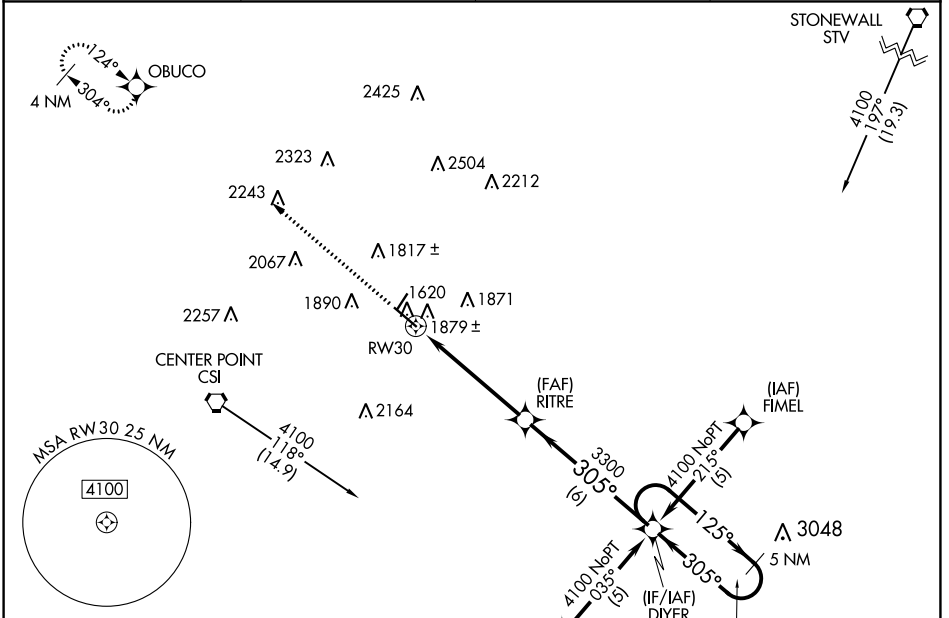
WAAS CH 77527 W30A	APP CRS 305°	Rwy Idg 5300 TDZE 1589 Apt Elev 1617
--	------------------------	---

RNAV (GPS) RWY 30

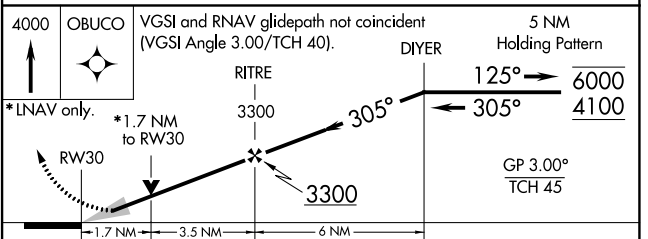
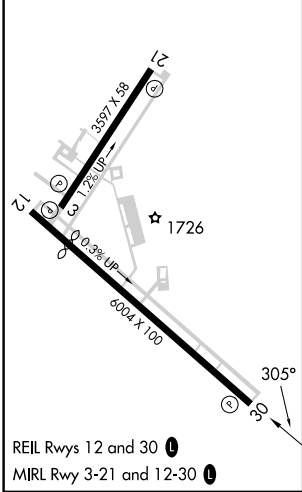
KERRVILLE MUNI/LOUIS SCHREINER FLD (ERV)

RNP APCH. ▽ ▲	MISSED APPROACH: Climb to 4000 direct OBUCO and hold.
---------------------	--

AWOS-3 118.125	HOUSTON CENTER 134.95 269.4	CLNC DEL 134.95	UNICOM 122.7 (CTAF) 📻
--------------------------	---------------------------------------	---------------------------	---------------------------------



ELEV 1617	D	TDZE 1589
-----------	---	-----------



CATEGORY	A	B	C	D
LPV DA	1860-1 271 (300-1)			NA
LNAV MDA	2140-1	551 (600-1)	2140-1½ 551 (600-1½)	NA
CIRCLING	2320-1 703 (800-1)	2340-1 723 (800-1)	2380-2¼ 763 (800-2¼)	NA

KERRVILLE, TEXAS
Orig-B 30JAN20

29°59'N-99°05'W

RNAV (GPS) RWY 30

SC-3, 22 FEB 2024 to 21 MAR 2024

SC-3, 22 FEB 2024 to 21 MAR 2024