

APP CRS Rwy Idg **6743**
 301° TDZE **4111**
 Apt Elev **4124**

RNAV (RNP) RWY 30

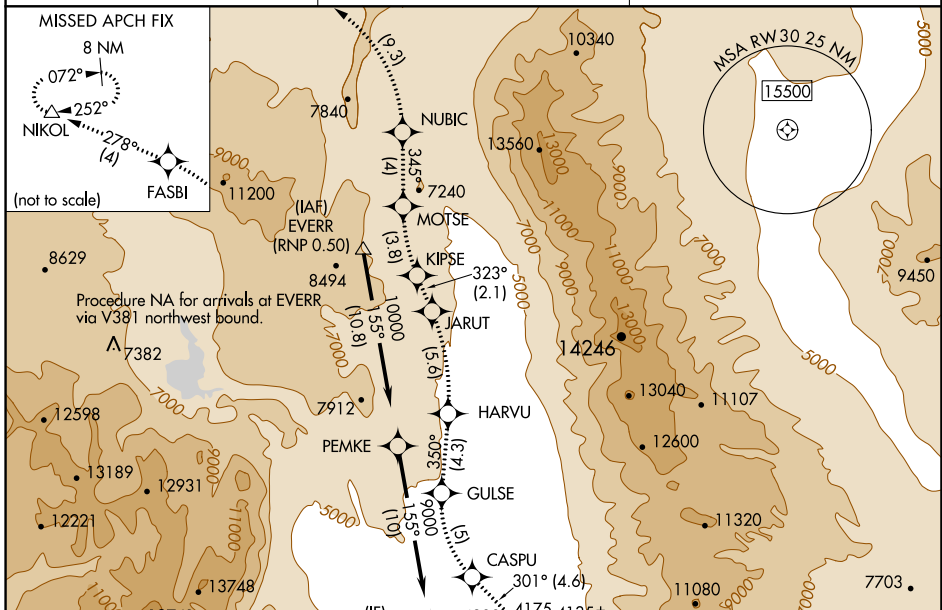
BISHOP (BIH)

RNP AR APCH, RF required.

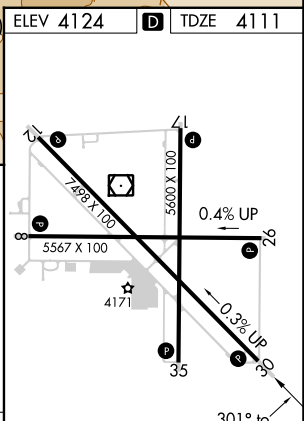
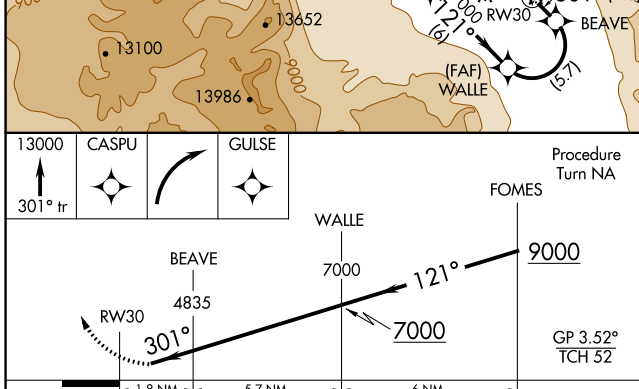
▲ NA For uncompensated Baro-VNAV systems, procedure NA below -12°C or above 54°C.

MISSED APPROACH: Climb to 13000 via 301° track to CASPU, right turn to GULSE, 350° track to HARVU, left turn to JARUT, 323° track to KIPSE, right turn to MOTSE, 345° track to NUBIC, left turn to FASBI, 278° track to NIKOL and hold.

ASOS 119.025	OAKLAND CENTER 125.75 284.65	UNICOM 123.0 (CTAF)
-------------------------------	---	--------------------------------------



ELEV 4124 D TDZE 4111



CATEGORY	A	B	C	D
RNP 0.30 DA	4476-1	365 (400-1)		NA

AUTHORIZATION REQUIRED

MIRL Rwy 8-26, 12-30, and 17-35
 REIL Rwy 12, 17, 30 and 35