

WAAS CH 49215 W18A	APP CRS 176°	Rwy Idg TDZE Apt Elev	5005 842 864
--	------------------------	-----------------------------	---

RNAV (GPS) RWY 18

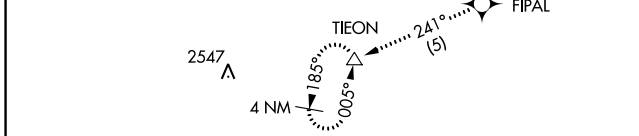
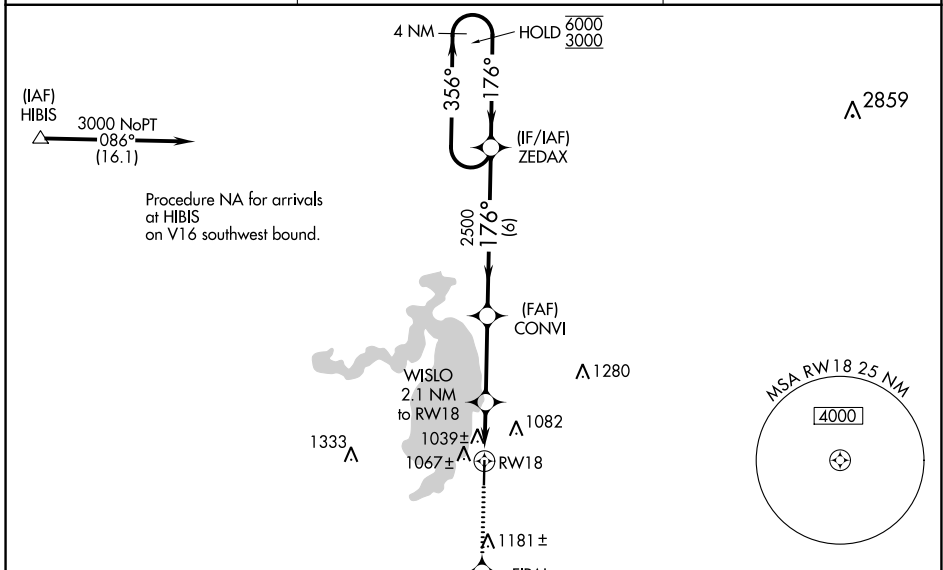
BRIDGEPORT MUNI (XBP)

RNP APCH.

Baro-VNAV and VDP NA when using Decatur altimeter setting. Rwy 18 helicopter visibility reduction below 3/4 SM NA. For uncompensated Baro-VNAV systems, LNAV/VNAV NA below -16°C or above 54°C. When local altimeter setting not received, use Decatur altimeter setting and increase LPV DA to 1342 feet and LNAV/VNAV DA to 1423 feet; increase all MDAs 60 feet.

MISSED APPROACH: Climb to 3600 direct FIPAL and on track 241° to TIEON and hold, continue climb-in-hold to 3600.

AWOS-3PT 119.225	FORT WORTH CENTER 127.0 360.6	UNICOM 123.0 (CTAF)
----------------------------	---	-------------------------------



ELEV 864	TDZE 842
----------	----------

MIRL Rwy 18-36

3600	FIPAL	TIEON	VGSi and RNAV glidepath not coincident (VGSi Angle 3.00/TCH 51).	
↑	✦	tr 241°	△	
*LNAV only.		WISLO 2.1 NM to RWY18	CONVI	ZEDAX 4 NM Holding Pattern
1.4 NM to RWY18		1520	2500	356° → 6000 ← 176° 3000
1.4		0.7	3.1 NM	6 NM
GP 3.00°		TCH 40		

CATEGORY	A	B	C	D
LPV DA	1285-1 1/2	443 (500-1 1/2)		NA
LNAV/VNAV DA	1366-2	524 (600-2)		NA
LNAV MDA	1300-1	458 (500-1)		NA
CIRCLING	1480-1	616 (700-1)		NA

SC-2, 22 FEB 2024 to 21 MAR 2024

SC-2, 22 FEB 2024 to 21 MAR 2024