

WAAS CH <b>86535</b> <b>W13A</b>	APP CRS <b>126°</b>	Rwy Idg TDZE Apt Elev	<b>6132</b> <b>3534</b> <b>3545</b>
----------------------------------------	------------------------	-----------------------------	-------------------------------------------

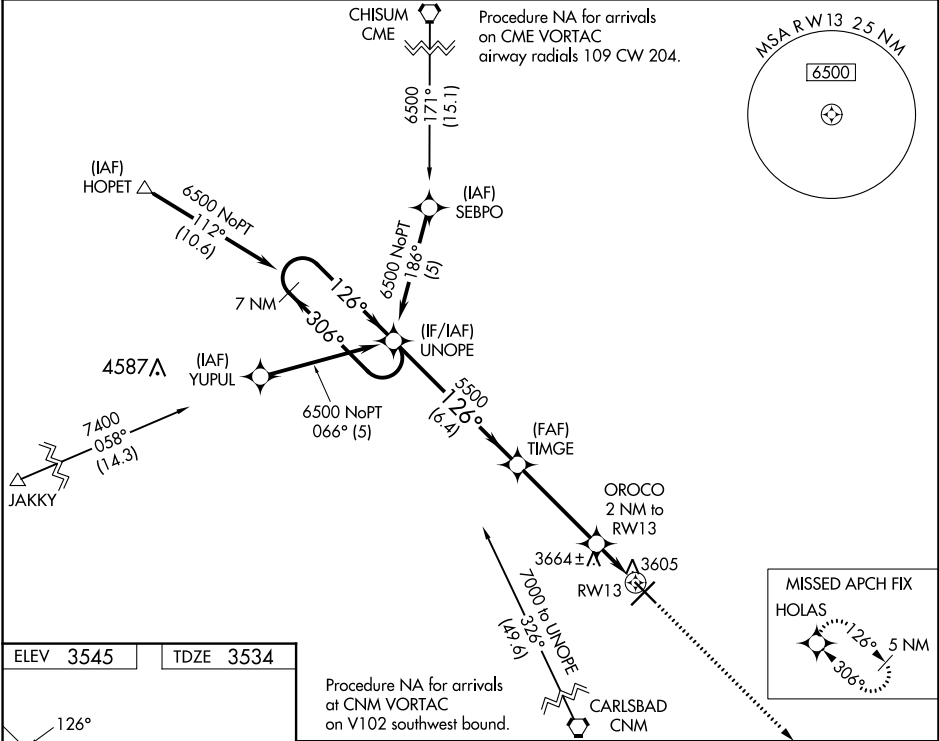
# RNAV (GPS) RWY 13

ARTESIA MUNI (ATS)

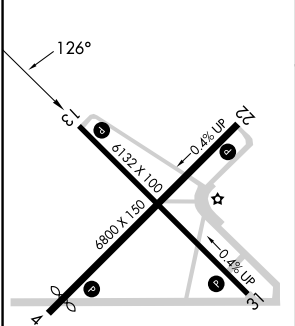
**⚠** For uncompensated Baro-VNAV systems, LNAV-VNAV NA below -22°C (-7°F) or above 54°C (130°F). DME/DME RNP-0.3 NA.

MISSED APPROACH: Climb to 5900 direct HOLAS and hold.

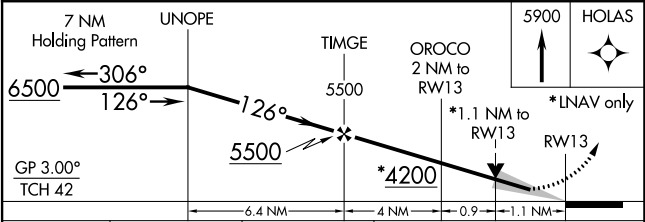
AWOS-3 <b>126.725</b>	ROSWELL APP CON * <b>119.6 239.0</b>	UNICOM <b>123.075 (CTAF) 0</b>
--------------------------	-----------------------------------------	-----------------------------------



ELEV 3545	TDZE 3534
-----------	-----------



Procedure NA for arrivals at CNM VORTAC on V102 southwest bound.



CATEGORY	A	B	C	D
LPV DA		3734- <sup>3</sup> / <sub>4</sub>	200 (200- <sup>3</sup> / <sub>4</sub> )	
LNAV/VNAV DA		3784- <sup>7</sup> / <sub>8</sub>	250 (300- <sup>7</sup> / <sub>8</sub> )	
LNAV MDA	3920-1	386 (400-1)	3920-1 <sup>1</sup> / <sub>8</sub>	386 (400-1 <sup>1</sup> / <sub>8</sub> )
<b>C</b> CIRCLING	3980-1 435 (500-1)	4000-1 455 (500-1)	4080-1 <sup>1</sup> / <sub>2</sub> 535 (600-1 <sup>1</sup> / <sub>2</sub> )	4240-2 <sup>1</sup> / <sub>4</sub> 695 (700-2 <sup>1</sup> / <sub>4</sub> )

MIRL Rwy 4-22 and 13-31 0

SW-1, 22 FEB 2024 to 21 MAR 2024

SW-1, 22 FEB 2024 to 21 MAR 2024