

WAAS CH <b>40115</b> <b>W33A</b>	APP CRS <b>326°</b>	Rwy Idg TDZE Apt Elev	<b>4000</b> <b>1025</b> <b>1025</b>
--	------------------------	-----------------------------	---

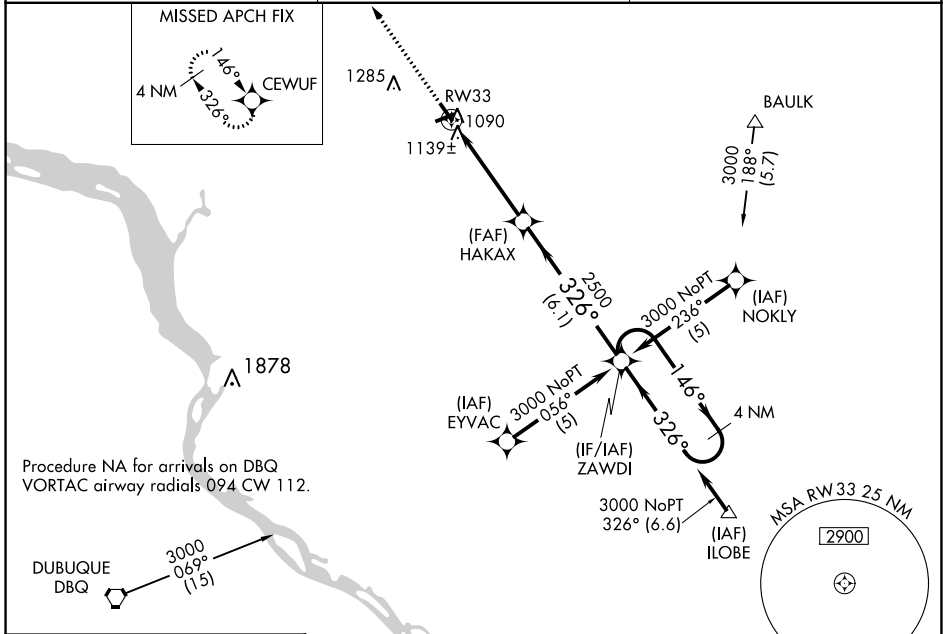
# RNAV (GPS) RWY 33

PLATTEVILLE MUNI (PVB)

**⚠** For uncompensated Baro-VNAV systems, LNAV/VNAV NA below -17°C (2°F) or above 54°C (130°F), DME/DME RNP-0.3 NA. When local altimeter setting not received, use Dubuque altimeter setting and increase LPV DA to 1331 feet; increase LNAV/VNAV DA to 1497 feet and all Cats visibilities ¼ SM; increase all MDAs 60 feet, increase LNAV and Circling Cat C visibility ¼ SM. Baro-VNAV and VDP NA when using Dubuque altimeter setting.

**⚠** MISSED APPROACH: Climb to 3000 direct CEWUF and hold.

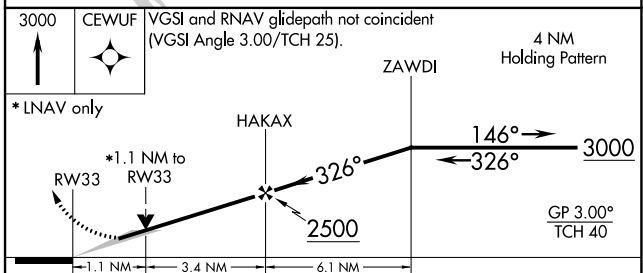
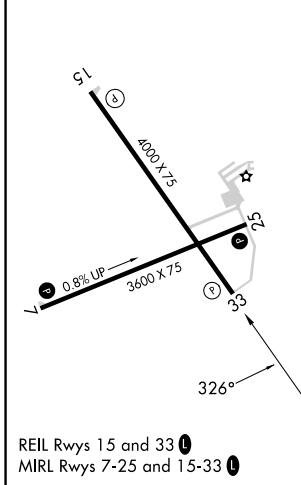
AWOS-3 <b>120.575</b>	CHICAGO CENTER <b>133.95 281.4</b>	UNICOM <b>122.7 (CTAF) 0</b>
--------------------------	---------------------------------------	---------------------------------



EC-3, 22 FEB 2024 to 21 MAR 2024

EC-3, 22 FEB 2024 to 21 MAR 2024

ELEV 1025	TDZE 1025
-----------	-----------



CATEGORY	A	B	C	D
LPV DA	1275-1	250 (300-1)		NA
LNAV/VNAV DA	1441-1½	416 (500-1½)		NA
LNAV MDA	1400-1	375 (400-1)		NA
CIRCLING	1460-1 435 (500-1)	1600-1 575 (600-1)	1600-1½ 575 (600-1½)	NA