

WAAS CH <b>77837</b> <b>W19A</b>	APP CRS <b>188°</b>	Rwy Idg TDZE Apt Elev	<b>4501</b> <b>66</b> <b>67</b>
----------------------------------------	------------------------	-----------------------------	---------------------------------------

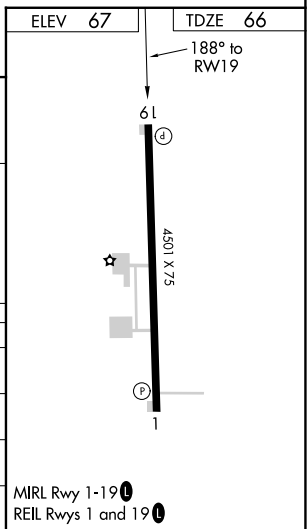
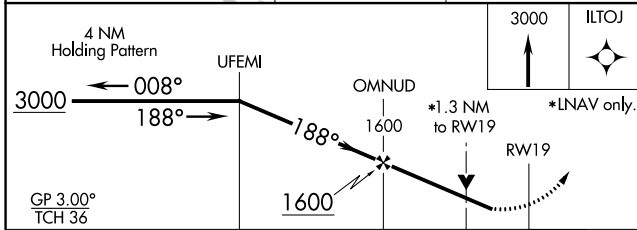
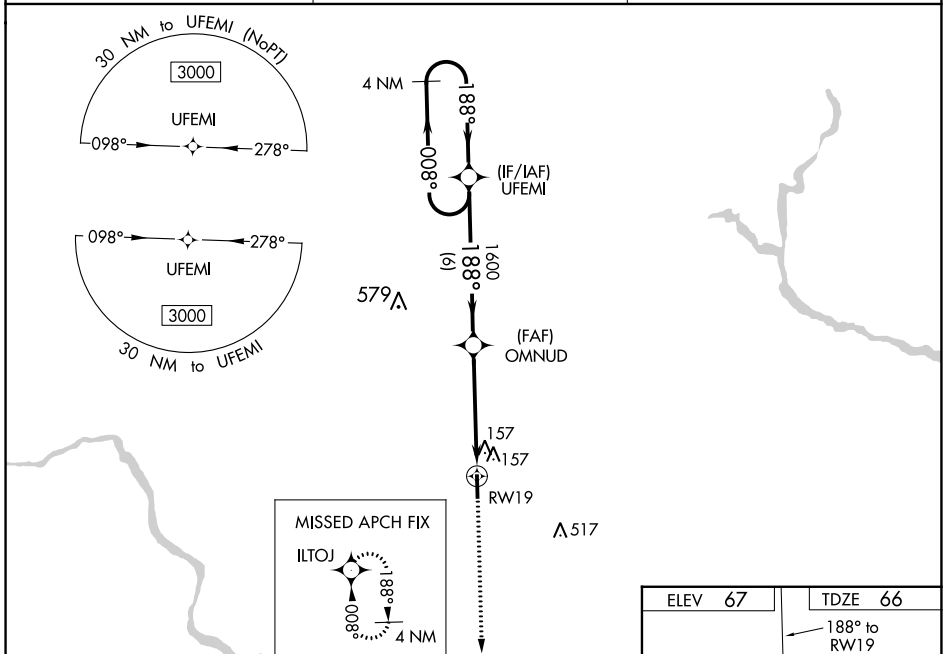
# RNAV (GPS) RWY 19

TRI-COUNTY AT HENRY JOYNER FLD (ASJ)

**⚠** DME/DME RNP-0.3 NA. Night Landing: Rwy 1 NA. VDP and Baro-VNAV NA when using Franklin altimeter setting. When local altimeter setting not received, use Franklin altimeter setting and increase all DA 67 feet and all MDA 80 feet; increase LPV and LNAV/VNAV all Cats visibility ¼ mile and LNAV Cat C/D visibility ½ mile. For uncompensated Baro-VNAV systems, LNAV/VNAV NA below -15°C (5°F) or above 54°C (130°F). Helicopter visibility reduction below ¾ SM NA.

**MISSED APPROACH:** Climb to 3000 direct ILTOJ and hold, continue climb-in-hold to 3000.

AWOS-3 <b>119.075</b>	WASHINGTON CENTER <b>123.85 279.65</b>	UNICOM <b>122.8 (CTAF) 0</b>
--------------------------	-------------------------------------------	---------------------------------



CATEGORY	A	B	C	D
LPV DA	353-1		287 (300-1)	
LNAV/VNAV DA	430-1¼		364 (400-1¼)	
LNAV MDA	520-1	454 (500-1)	520-1⅜	454 (500-1⅜)
<b>C</b> CIRCLING	580-1	513 (600-1)	580-1½	820-2½
			513 (600-1½)	753 (800-2½)

MIRL Rwy 1-19 **0**  
REIL Rwys 1 and 19 **0**

SE-2, 22 FEB 2024 to 21 MAR 2024

SE-2, 22 FEB 2024 to 21 MAR 2024