

WAAS CH 60940 W14A	APP CRS 135°	Rwy Idg 4000 TDZE 1392 Apt Elev 1402
--	------------------------	---

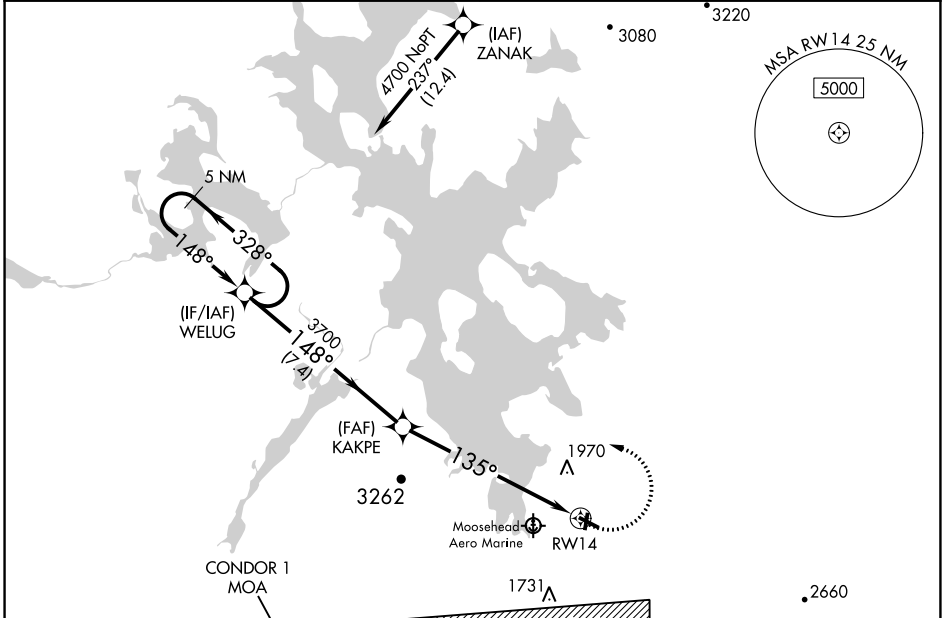
RNAV (GPS) RWY 14

GREENVILLE MUNI (3B1)

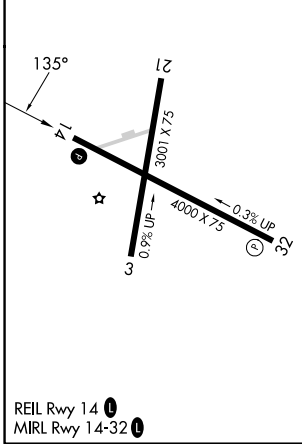
⚠ For uncompensated Baro-VNAV systems, LNAV/VNAV NA below -17°C (2°F) or above 54°C (130°F). DME/DME RNP-0.3 NA. Night landing: Rwy 3, 21, 32 NA.
⚠ -18°C ** Missed approach requires minimum climb of 215 feet per NM to 4200.

MISSED APPROACH: Climb to 2800 then climbing left turn to 5000 direct WELUG and hold.

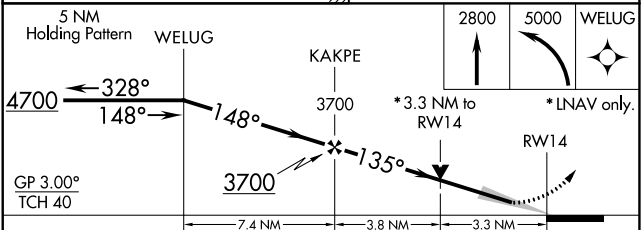
AWOS-A 124.175	BOSTON CENTER 120.25 346.4	CLNC DEL 122.3	UNICOM 122.8 (CTAF) 📻
--------------------------	--------------------------------------	--------------------------	--



ELEV 1402	TDZE 1392
------------------	------------------



Procedure NA for arrival on BGR VORTAC airway radials 251 CW 038.



CATEGORY	A	B	C	D
LPV DA		**1667-1	275 (300-1)	
LPV DA		2205-3	813 (900-3)	
LNAV/VNAV DA		2310-4	918 (1000-4)	
LNAV MDA	2500-1¼ 1108 (1100-1¼)	2500-1½ 1108 (1100-1½)	2500-3	1108 (1100-3)
📻 CIRCLING	2500-1¼ 1098 (1100-1¼)	2500-1½ 1098 (1100-1½)	2500-3 1098 (1100-3)	2660-3 1258 (1300-3)

NE-1, 22 FEB 2024 to 21 MAR 2024

NE-1, 22 FEB 2024 to 21 MAR 2024