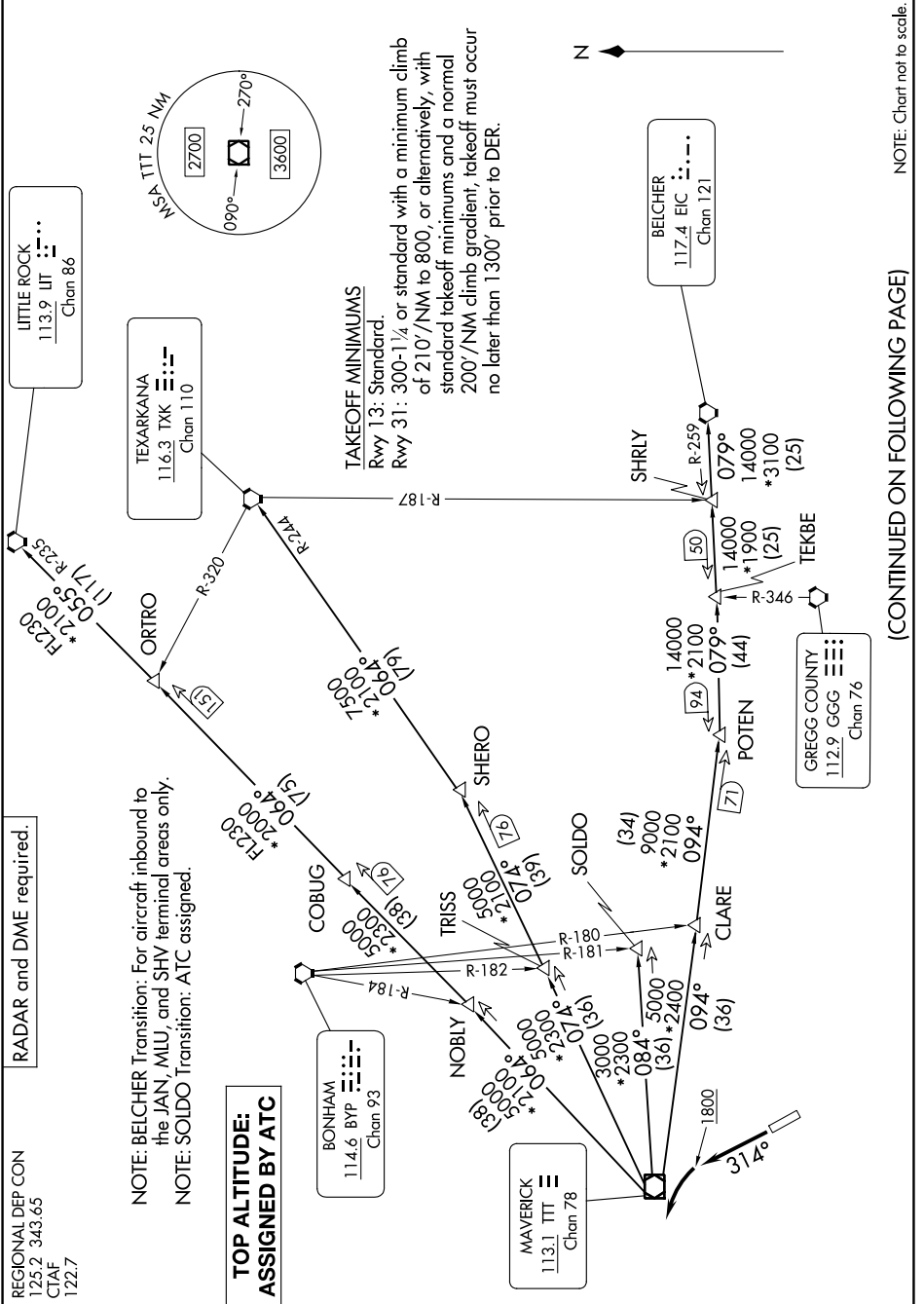


DALLAS THREE DEPARTURE

SC-2, 22 FEB 2024 to 21 MAR 2024



REGIONAL DEP CON
125.2 343.65
CTAF
122.7

RADAR and DME required.
NOTE: BELCHER Transition: For aircraft inbound to the JAN, MLU, and SHV terminal areas only.
NOTE: SOLDLO Transition: ATC assigned.

**TOP ALTITUDE:
ASSIGNED BY ATC**

BONHAM
114.6 BYP
Chan 93

LITTLE ROCK
113.9 UT
Chan 86

TEXARKANA
116.3 TKX
Chan 110

GREGG COUNTY
112.9 GGG
Chan 76

BELCHER
117.4 EIC
Chan 121

TAKEOFF MINIMUMS
Rwy 13: Standard.
Rwy 31: 300-1¼ or standard with a minimum climb of 210'/NM to 800, or alternatively, with standard takeoff minimums and a normal 200'/NM climb gradient, takeoff must occur no later than 1300' prior to DER.

(CONTINUED ON FOLLOWING PAGE)

NOTE: Chart not to scale.

SC-2, 22 FEB 2024 to 21 MAR 2024

DALLAS THREE DEPARTURE